

AquaHeat 33550 Snow Melt Controller

AquaHeat

JOB		REPRESENTATIVE	
ENGINEER		ORDER #	DATE
CONTRACTOR		SUBMITTED BY	DATE
PAGE #		APPROVED BY	DATE

Qty	Part #	Zones	Comments
	33550		
	33551		
	33552		
	33553		

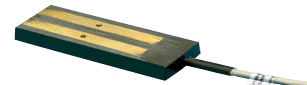
33550 is a 24 volt snowmelting controller capable of switching an outdoor heating system on/off or modulating by adding (2) 33555 supply/return sensors based on temperature and precipitation. Snow melt controller applications can include snow removal in walkways, steps, driveways, garage entrances, gutters, loading docks or other locations where snow and ice accumulation is a problem. 33550 detects outdoor temperature, ground temperature, moisture, and energizes electrical relays when snow or ice occurs. The systems heat source can be either hydronic or electric heating cables (with the use of an external relay).

Features:

- * Electronic on/off or modulating, Detects moisture and temperature, or temperature only
- * Choice of ground, gutter, or outdoor sensor
- * Several sensors can be connected to the controller
- * Any detector will activate all three relay outputs
- * Built in timer for manual snow melting
- * Optional external timer to start system
- * Remote switch activation

33550 Controller	
Mounting	Interior wall surface ONLY
Dimensions (W/ cover)	3.5" X 6.2" X 1.7"
Supply voltage	115/240 V AC
Output relays	3 Relays 10-A, 10-A, 16-A (potential free contacts)
On/off Differential	0.6°F
Ambient temperature	+32 / +122°F
Temperature range	-4 / +50°F
Built in timer	1-6, For manual snow melting
Detection mode (moist control)	ON: Moisture & temperature sensing OFF: Temperature only
LEDs Indicate the functions	ON: Supply voltage to thermostat Relay: The relays are energized Moist: Moisture on 33551 Temp: Outdoor temperature is below selected setting Timer: The built in timer is energized

33552 Outdoor Sensor	
Detection	Air temperature
Mounting	Exterior wall
Ambient Temperature	-4 to 158° F
Dimensions	3 3/8" X 1 3/4" X 1 3/8"



33551 Pavement Sensor	
Detection	Moisture and ground temperature
Mounting	Flush to surface
Cable Length	33 ft.
Ambient Temperature	-4 to 158° F
Dimensions	H: 1 1/4" DIA. 2 3/8"

33553 Gutter Sensor	
Detection	Moisture
Mounting	Gutter or downspout, used in combination with the 33552 sensor
Cable Length	33 ft.
Ambient Temperature	-4 to 158° F
Dimensions	4 1/8" X 1 1/4" X 1/2"