

AquaHeat ProMix Boiler System

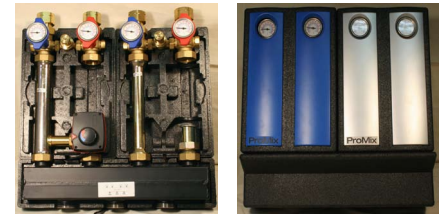
AquaHeat

JOB		REPRESENTATIVE	
ENGINEER		ORDER #	DATE
CONTRACTOR		SUBMITTED BY	DATE
PAGE #		APPROVED BY	DATE

Qty	Part #	Circuits	Size	Comments
	450057		1 1/4"	
	450085		1 1/4"	
			1 1/4"	
	450028		1 1/4"	

ProMix Three Circuit Boiler Mixing System

AquaHeat ProMix Compact Boiler and Header Modules are pre-assembled to facilitate the installation of mixed circuit heating solutions for small to large central boiler projects. Boiler modules are equipped with red (supply) and blue (return) ball valves including an integrated thermometers 32 - 248°F and a pressure relief valve. Header modules connect together the mixing and non-mixing header modules using 1 1/2" male BSP connectors. All boiler and header modules come with factory installed insulation.

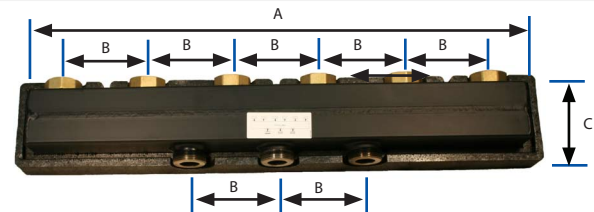
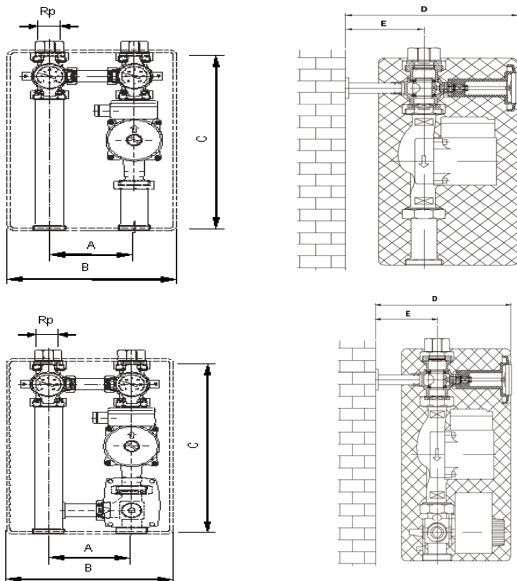


Materials	
Fittings	Hot-pressed brass, Ms58
Pipe systems	Precision pipes
Heat insulation cladding	EPP – with patented snap seam fitting
Grips	Glass fibre-reinforced and temperature-resistant plastic
O-ring seals	EPDM elastomers
Flat seals	AFM 34 or EPDM elastomers
Ball seats	PTFE (Teflon)

Note: ProMix mixing boiler modules are delivered without circulator pump. AquaHeat #451558 Grundfos system matched pumps are available.

ProMix Boiler Module Type	#450085 Non Mixing Boiler Module	#45057 Mixing Boiler Module	#450028 Mixing Boiler Module
Max. operating temperature	230°F	230°F	230°F
Min. operating temperature	4°F	4°F	+59°F
Max. operating pressure	147 psi	147 psi	147 psi
Max. capacity	85K BTU/h	57K BTU/h	
Voltage	24v-ac		
Weight (weight incl. avg. pump weight)	8.5 (~17.0) lbs	11 (~19.0) lbs	20.3 lbs

* Possibility of condensate formation at media temperature below 20°C. In addition, suitable cooling agents must be used if the media temperature falls below the freezing point of water.



ProMix Module Dimensions	#450085	#45057	#450028
Rp	1 1/4"	1 1/4"	
A	4 15/16"	4 15/16"	29 1/2"
B	9 7/8"	9 7/8"	4 15/16"
C	13 15/16"	13 15/16"	5 1/8"
D	8 11/16"	8 11/16"	
E	3 15/16"	3 15/16"	