

Product Catalog

January 2022

AquaHeat

Radiant Heat & Snowmelt

AquaSeal

Pex Piping & Plumbing

TerrePex

Pre-insulated Pex-A Piping Systems



Integrating the best technologies by delivering optimal performance and efficiency.

AquaHeat

Radiant heating and snowmelting products.

The widest selection of pex pipe under one banner anywhere Pex-A, Pex-B, PERT, and Multi-layer pipe for best features and price points. ProMix and ProLock manifolds and controls provide best distribution and control solutions.

AquaSeal

Pex piping and plumbing products.

Pex-A and Pex-B in red, blue and natural colors in a variety of lengths make plumbing with pex fast and easy.

TerrePex

Pre insulated Pex-A Piping System

Insulated pex pipe systems for direct burial delivering energy with minimal BTU loss.

TECHNOLOGY INTEGRATION

Implementing new products and tools while embracing proven legacy products delivering what customers promise.

CONTROL AT ANY LEVEL

RESIDENTIAL, COMMERCIAL, INDUSTRIAL

Adding and removing energy precisely for maximum comfort and efficiency. Providing sufficient systems for fastest return on investment. Re-inventing processes while reducing energy consumption.

TIME HONORED FORWARD THINKING

While the concepts and tools are as old as time, new technologies serve to redefine and reapply known value for greater achievement of needs and goals.

DELIVERING TOMORROW'S TECHNOLOGY TODAY

Building with ComfortPro Systems means compatibility with the next generation of appliances not yet invented.

ComfortPro Systems LLC
phone: 800-968-8905
fax: 816-425-9824
orders@comfortprosystems.com

www.comfortprosystems.com

Table of Contents

AQUAHEAT

Pex-A Pipe	5
Pex-A Large Diameter SDR-9	6
Pex-B	7
Pentagol 5 Layer	8
Heat PERT/PERT	9
Transfer Plates & Panels	10
Supports and Fasteners	11-12
Brass Compression Fittings.....	13
Injection Controls/Valves.....	14
Snowmelt Controls	15
Promix Manifolds.....	16-21
Copper Manifolds.....	22-23
Controls.....	24
LoopCad	25

AQUASEAL

Pex-A Pipe	27
Pex-A Large Diameter	28
Pex-B Pipe.....	29
ASTM-F 1960 Brass Fittings.....	30-32
ASTM-F 1960 Plastic Fittings	33-34
ASTM-F 1807 Brass Fittings.....	35-38
Multiport Tees.....	39
ASTM-F 2159 Poly Fittings.....	40-41
Press Sleeves and Tools	42
Clamps and Tools.....	43

TERRE-PEX

Terre-Pex Insulated Pipes	44-46
Dust and Shrink Caps.....	47
Terre-Pex Accessories.....	48-50
Warranties	51

AquaHeat System Solution

Plumbing, heating and cooling systems work better when they work together. That's why ComfortPro delivers a total, integrated solution that's smart, simple, and as energy-efficient as possible.

Demand a better approach

Most others offer single solutions, only ComfortPro has the range of products - and depth of experience - to provide a thorough, solutions-focused approach that maximizes heating and cooling output while minimizing time and effort.

The ComfortPro line of products

Our business is to understand the unique needs of your job and deliver the very best system for it.

A better approach, A better system.

Benefits & Approvals

AquaHeat and AquaSeal uses only crosslinked polyethylene tubing. Known as PEX, crosslinked polyethylene offers distinct advantages over both metal piping materials and other plastic alternatives. Our pipe is virtually maintenance free. It is corrosion resistant, flexible, and remarkably clean. Long used worldwide, PEX has an outstanding and unblemished track record of quality performance. PEX's crosslinked molecular structure offers toughness and lasting durability. Our crosslinked polyethylene piping withstands temperatures ranging from below freezing to above the boiling point. Because it is pliable, a section of 1/2" pipe can be bent into a 3" (77mm) radius at 68 F (20 C) without affecting tubing integrity. The material is highly crush resistant and can be submerged in concrete or earth without any damage.

Approvals

AquaHeat and AquaSeal PEX pipe has been manufactured to ASTM F-876/F-877/F-2023/E-84/F1960/F-2080, NSF-61, ICC & CSA B137.5 and approved by CSA, IAPMO and ICBO for use with potable water systems. AquaHeat is certified for continuous use at pressures of 100 psi and temperatures up to 180 F.

AquaSeal Pex pipe meets the requirements of ASTM F-2023 chlorine standard. AquaSeal is certified for continuous use at pressures of 100psi and temperatures up to 180 F.

The AquaHeat brass fittings are not approved for potable water use and do not meet the lead free requirements of ASTM F1807 & CSA B137.5 standards.

AquaSeal brass fittings and valves meet the lead free requirements per U.S. Senate Bill S.3874 less than 0.25% Pb. NSF 61G, of ASTM F1807 & CSA B137.5 standards. Fittings with soldering or brazing end conform to ASME B16.22 and NPT male thread, NPSM female thread conform to ANSI/ASME B1.20.1.

The AquaSeal ProPlas plastic fittings meet the requirements of ASTM F-2159 & CSA B137.5 standards.

It is the sole responsibility of the installer to verify that the product meets local standards.

AquaHeat, AquaSeal and ComfortPro® Systems are registered trademarks.

PEX-A Pipe

AquaHeat Pex-A tubing is made using the Engel method. The Engel method is a hot cross-linking process, meaning the actual cross-linking takes place during the extrusion process when the base polyethylene is above its crystal melting temperature. The Engel method provides more precise control over the degree, consistency and uniformity of cross-linking. This means the tubing is evenly cross-linked, with no weak links within its molecular chains.

PEX-A Piping 94000 Series



Description	Part #	Qty
3/8" PEX-A x 300' With O ₂ Diffusion Barrier	94312	1
3/8" PEX-A x 1000' With O ₂ Diffusion Barrier	94112	1
1/2" PEX-A X 20' Pipe with O ₂ Diffusion Barrier	94205	20/Bag
1/2" PEX-A x 100' With O ₂ Diffusion Barrier	94005	1
1/2" PEX-A x 300' With O ₂ Diffusion Barrier	94305	1
1/2" PEX-A x 500' With O ₂ Diffusion Barrier	94505	1
1/2" PEX-A x 1000' With O ₂ Diffusion Barrier	94105	1
5/8" PEX-A x 450' With O ₂ Diffusion Barrier	94419	1
5/8" PEX-A x 500' With O ₂ Diffusion Barrier	94519	1
5/8" PEX-A x 1000' With O ₂ Diffusion Barrier	94119	1
3/4" PEX-A X 20' Pipe with O ₂ Diffusion Barrier	94222	10/Bag
3/4" PEX-A x 100' With O ₂ Diffusion Barrier	94102	1
3/4" PEX-A x 300' With O ₂ Diffusion Barrier	94322	1
3/4" PEX-A x 500' With O ₂ Diffusion Barrier	94522	1
3/4" PEX-A x 1000' With O ₂ Diffusion Barrier	94122	1
1" PEX-A X 20' Pipe with O ₂ Diffusion Barrier	94228	5/Bag
1" PEX-A x 100' With O ₂ Diffusion Barrier	94128	1
1" PEX-A x 300' With O ₂ Diffusion Barrier	94328	1
1" PEX-A x 500' With O ₂ Diffusion Barrier	94528	1

PEX-A Pipe SDR-9

AquaHeat



PEX-A Piping 94900 series SDR-9

Description	Part #	Qty
PEX-A 1-1/4" X 20' SDR-9 Pipe with O ₂ Diffusion Barrier	94942	5/bag
PEX-A 1-1/4" X 100' SDR-9 Pipe with O ₂ Diffusion Barrier	94940	1
PEX-A 1-1/4" X 300' SDR-9 Pipe with O ₂ Diffusion Barrier	94943	1
PEX-A 1-1/4" X 1000' SDR-9 Pipe with O ₂ Diffusion Barrier	94945	1
PEX-A 1-1/2" X 20' SDR-9 Pipe with O ₂ Diffusion Barrier	94952	5/bag
PEX-A 1-1/2" X 100' SDR-9 Pipe with O ₂ Diffusion Barrier	94950	1
PEX-A 1-1/2" X 300' SDR-9 Pipe with O ₂ Diffusion Barrier	94953	1
PEX-A 1-1/2" X 1000' SDR-9 Pipe with O ₂ Diffusion Barrier	94955	1
PEX-A 2" X 20' SDR-9 Pipe with O ₂ Diffusion Barrier	94962	5/bag
PEX-A 2" X 100' SDR-9 Pipe with O ₂ Diffusion Barrier	94963	1
PEX-A 2" X 300' SDR-9 Pipe with O ₂ Diffusion Barrier	94964	1
PEX-A 2" X 1000' SDR-9 Pipe with O ₂ Diffusion Barrier	94965	1

PEX-B

PEX-B Piping 93000 series

AquaHeat Pex-B pipes are manufactured from special HDPE resins. The cross-linking is performed in a state of the art Silane accelerator post extrusion resulting in an excellent and even cross-linking. The cross-linking renders the pipe improved mechanical process such as resistance to corrosion, pressures at high temperature, superb abrasion and chemical resistance. Product is coated with EVOH barrier which prevents oxygen from entering the system through the pipe wall. Products are manufactured in red color. AquaHeat Pex-B pipes can be used with the following ASTM fitting systems: F2159, F1807, F1960, and F2080.



Description	Part #	Qty
3/8" PEX-B x 300' With O ₂ Diffusion Barrier	93312	1
3/8" PEX-B x 1000' With O ₂ Diffusion Barrier	93112	1
1/2" PEX-B x 20' Pipe with O ₂ Diffusion Barrier	93205	50/Bag
1/2" Pex-B x 100' With O ₂ Diffusion Barrier	93005	1
1/2" PEX-B x 300' With O ₂ Diffusion Barrier	93305	1
1/2" PEX-B x 1000' With O ₂ Diffusion Barrier	93105	1
5/8" PEX-B x 450' With O ₂ Diffusion Barrier	93419	1
5/8" PEX-B x 500' With O ₂ Diffusion Barrier	93519	1
5/8" PEX-B x 1000' With O ₂ Diffusion Barrier	93119	1
3/4" PEX-B X 20'Pipe with O ₂ Diffusion Barrier	93222	25/Bag
3/4" PEX-B x 100' With O ₂ Diffusion Barrier	93102	1
3/4" PEX-B x 300' With O ₂ Diffusion Barrier	93322	1
3/4" PEX-B x 500' With O ₂ Diffusion Barrier	93522	1
3/4" PEX-B x 1000' With O ₂ Diffusion Barrier	93122	1
1" PEX-B X 20' Pipe with O ₂ Diffusion Barrier	93228	5/Bag
1" PEX-B x 100' With O ₂ Diffusion Barrier	93128	1
1" PEX-B x 300' With O ₂ Diffusion Barrier	93328	1
1" PEX-B x 500' With O ₂ Diffusion Barrier	93528	1

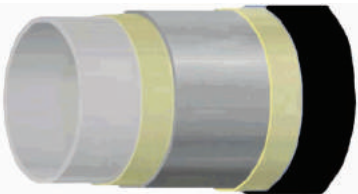
MULTI LAYER PEX Pipe

Pentagol PEX Piping 95000 series

Pentagol is a five layer pex heating pipe with exceptional barrier properties and flexibility. It's Advantages are high flex-ibility, low oxygen permeability, full scratch protection barrier layer, full moisture protection barrier layer with a black UV outer layer.

- Completely quiet - ideal for wooden floors
- Most flexible for snow melt applications

Description	Part #	Qty
Pentagol 3/8" x 300' five layer with O ₂ Diffusion Barrier	95312	1
Pentagol 3/8" x 1000' five layer with O ₂ Diffusion Barrier	95112	1
Pentagol 1/2" x 300' five layer with O ₂ Diffusion Barrier	95305	1
Pentagol 1/2" x 500' five layer with O ₂ Diffusion Barrier	95505	1
Pentagol 1/2" x 1000' five layer with O ₂ Diffusion Barrier	95105	1
Pentagol 5/8" x 20' five layer with O ₂ Diffusion Barrier	95219	10/bag
Pentagol 5/8" x 450' five layer with O ₂ Diffusion Barrier	95419	1
Pentagol 5/8" x 1000' five layer with O ₂ Diffusion Barrier	95119	1
Pentagol 3/4" x 20' five layer with O ₂ Diffusion Barrier	95202	10/bag
Pentagol 3/4" x 100' five layer with O ₂ Diffusion Barrier	95102	1
Pentagol 3/4" x 300' five layer with O ₂ Diffusion Barrier	95322	1
Pentagol 3/4" x 500' five layer with O ₂ Diffusion Barrier	95522	1
Pentagol 3/4" x 1000' five layer with O ₂ Diffusion Barrier	95122	1
Pentagol 1" x 20' five layer with O ₂ Diffusion Barrier	95228	5/bag
Pentagol 1" x 100' five layer with O ₂ Diffusion Barrier	95128	1
Pentagol 1" x 300' five layer with O ₂ Diffusion Barrier	95328	1
Pentagol 1" x 500' five layer with O ₂ Diffusion Barrier	95528	1

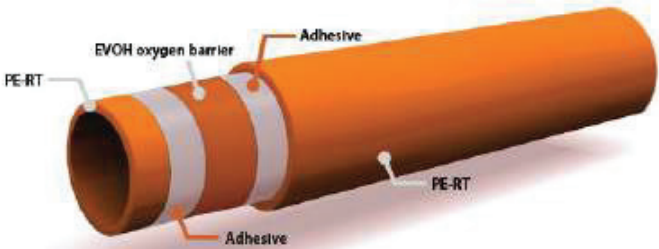


Heat -PERT and PERT Piping 91000 Series

Aqua Heat Heat Pert pipe is a 5 layer pipe made from Dowlex 2344 resin offering high temperature and pressure resistance without cross linking of the pipe. PERT stands for Poly Ethylene Raised Temperature and carries ratings up to 180F at 100psi. It has superior flexibility and can be used in both radiant and snow melt systems. It is manufactured to ASTM F2623 and is approved by NSF and CSA. Oxygen diffusion meets DIN 4726 which limits oxygen permeation through the pipe wall. It is SDR9 sized pipe and can be used with any ASTM F1807 or F2159 fittings.



Item #	Description	Qty
91312	3/8"x300' Heat-Pert Barrier Pipe	1
91112	3/8"x1,000' Heat-Pert Barrier Pipe	1
91005	1/2"x100' Heat-Pert Barrier Pipe	1
91305	1/2"x300' Heat-Pert Barrier Pipe	1
91105	1/2"x1,000' Heat-Pert Barrier Pipe	1
91205	1/2"x2,000' Heat-Pert Barrier Pipe	1
91319	5/8"x300' Heat-Pert Barrier Pipe	1
91519	5/8"x500' Heat-Pert Barrier Pipe	1
91119	5/8"x1,000' Heat-Pert Barrier Pipe	1
91102	3/4"x100' Heat-Pert Barrier Pipe	1
91322	3/4"x300' Heat-Pert Barrier Pipe	1
91122	3/4"x1,000' Heat-Pert Barrier Pipe	1



Track-Plates

Heat Transfer Plates 87000 series



NEW ITEM

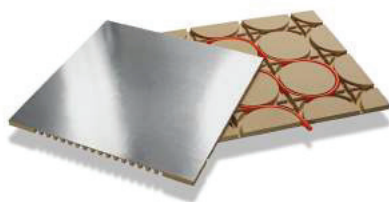
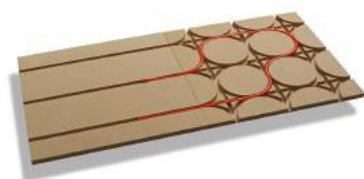
Heat transfer plates are used for Dry Below installations of 3/8", 1/2" or 5/8" pex. Plates provide a direct transfer and heat distribution from Pex piping to the underside of a wooden subfloor. HeatTrak simplifies the installation by allowing the pipe to be snapped in place.

Description	Part #	Qty/bun- dle
VersaPlate 24" Aluminum Heat Transfer Plate	87008	50
VersaPlate 48" Aluminum Heat Transfer Plate	87009	50



Description	Part #	Qty/box
HeatTrak 3/8" x 4'	87022	20
HeatTrak 1/2" x 4'	87025	20

ProPanel series



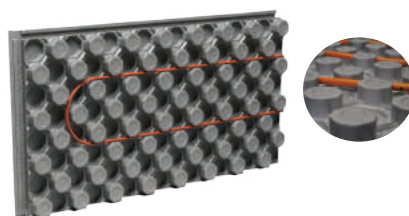
STOCK

SPECIAL ORDER

Description	Part #	Qty
24 x 24 x 3/4" 1/2" Pipe Straight Run	82434	1
24 x 24 x 3/4" 1/2" Pipe Ultimate Board	92434	1
24 x 24 x 5/8" 3/8" Pipe Straight Run	82458	1
24 x 24 x 5/8" 3/8" Pipe Ultimate Board	92458	1

The new AquaHeat ProPanel radiant heat panels for dry above systems are available for 3/8" and 1/2" pex tubing. ProPanel is available in 24" x 24" with aluminum coating on the bottom of the panels to reflect the heat upwards and the cold down. The panels come in two configurations, straight and turning or what we call the Ultimate panel as it allows turning in any direction without any routing needed. The pipe grooves are specially manufactured on 8 centers so that the pex tubing snaps into the grooves and stays without needing silicone to hold the tubing in place. ProPanel is approved for indoor use manufactured with MDF composite board and is water resistant.

Insulated Pex Panels



Standard	ASTM C518-10	ASTM D1621-10	ASTM E 96E96M-12	Overall Board Size (l x w)	Usable Size (l x w)	Overall Thickness Including Grid	Pex Pipe Accommodation
Description	R-Value	Compressive Strength	Water Vapor Barrier	Inches	Inches	Inches	Inches
102015	10°F.ft ² .h/Btu	28.0 psi	23.8 (ng/Pa.s.m ²) 0.42 Perms	49.25" x 25.25"	48" x 24"	3 3/8"	3/8", 1/2", 5/8", 3/4", 1"

Supports / Fasteners

Conduit Elbows 86000 series



High impact strength moulded plastic 90 degree long radius elbow, designed to direct and protect heating pipes in transition areas where pipe enters and exits concrete slab.

Description	Part #	Qty/box
3/8" & 1/2" Conduit Elbows	86005	60
5/8" & 3/4" Conduit Elbows	86020	40

Pipe Tracking 89100 series



Pipe tracking provides even pipe spacing and exact regulation of pipe heights and can be fastened to many surfaces; concrete or plywood subfloors, steel Q decking, and styrofoam insulation.

Description	Part #	Qty
3/8", 1/2", 5/8", 3/4" x 39.5" Pipe Tracking	89122	1
Staples for 89122 tracking	82050	500

Metal Bend Support 86100 series



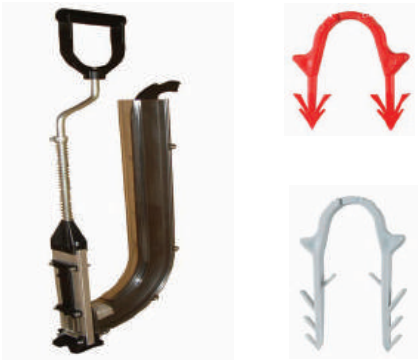
Description	Part #	Qty / Box
Metal Bend Support for 3/8" Pipe	86114	50
Metal Bend Support for 1/2" Pipe	86115	50
Metal Bend Support for 5/8" Pipe	86116	50
Metal Bend Support for 3/4" Pipe	86117	25

Tube Talon 12000 series



Description	Part #	Qty / Bag
1/2" Tube Talon W/Nail	12005	100
3/4" Tube Talon W/Nail	12022	100

Supports / Fasteners



Multi Tacker Staples

Description	Part #	Qty
Multi Tacker Tool	10221	1
1-1/2" Multi Tacker Staples For 10221 Stapler	10222	300
2-5/8" Multi Tacker Staples For 10221 Stapler	10223	300

Staples are used to fasten pex to insulation.



Straps 89000 series

Description	Part #	Qty/bag
7" Nylon Straps 1M	89107	1000

Cable ties are used to fasten pex piping to wire mesh or rebar.

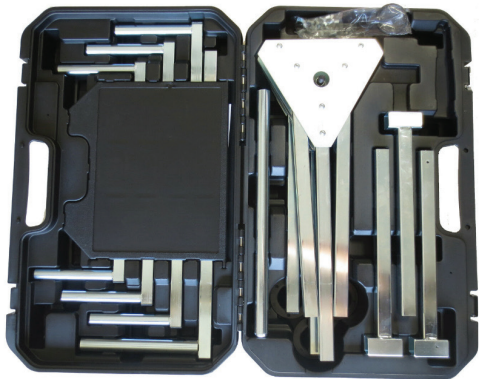


Claw Clip Fixing Tool 10300 series

Description	Part #	Qty / Box
Claw Clip Fixing Tool	10300	1
1/2" - 5/8" Claw Clip for 3/16" Wire Mesh Blue	10302	400

Claw clips are used to fasten pex piping to wire mesh.

PRO PEX Un-Coiler 3/8", 1/2", 5/8", 3/4", 1"



Description	Part #	Qty
Portable Pipe Un-coiler	82001	1



Comes in hard plastic case and takes just a few minutes to put together.

* Brass Fittings

PEX to Sweat Adapters 67000 series



Description	Part #	Qty/bag
5/8" PEX x 3/4" Sweat Adapter	67019	25
3/4" PEX x 3/4" Sweat Adapter	67022	25
1/2" PEX x 1/2" Female Sweat Adapter	67105	25
5/8" PEX x 3/4" Female Sweat Adapter	67119	25
5/8" PEX x 3/4" Fem. Sweat 90 Degree Elbow	67319	25
3/4" PEX x 3/4" Fem Sweat 90 Degree Elbow	67322	25
1/2" PEX x 3/4" Female Sweat Adapter	67505	25
1/2" PEX x 3/4" Sweat 90 Degree Elbow	67705	25

PEX Compression to MIP Adapters 68000 series



Description	Part #	Qty/bag
3/8" PEX x 1/2" MIP Adapter	68012	25
1/2" PEX x 1/2" MIP Adapter	68005	25
5/8" PEX x 3/4" MIP Adapter	68019	25
3/4" PEX x 3/4" MIP Adapter	68022	25

PEX Compression Couplings 69000 series



Description	Part #	Qty/bag
3/8" PEX Pipe Coupling	69012	25
1/2" PEX Pipe Coupling	69005	25
5/8" PEX Pipe Coupling	69019	25
3/4" PEX Pipe Coupling	69022	25
1" PEX Pipe Coupling	69028	25

*Note: For hydronic system use only. Not intended for potable water systems.

Injection Controls / Valves

Injection Controller 57090 series



Description	Part #	Qty
Thermostatic Head	57091	1
Thermostatic head c/w capillary (104-158 F)	57092	1
Thermostatic head c/w capillary (68-122 F)	57093	1

Zone Valves 62000 series



Provides on/off or modulated flow control for baseboard, fan coils, manifold

Description	Part #	Qty
1/2" NPT Straight Zone Valve	62016	1
3/4" NPT Straight Zone Valve	62020	1
1" NPT Straight Zone Valve	62025	1

Thermostatic 3-Way Mixing Valves 62900 series

Thermostatic mixing valve insures accurate temperature protection with varying input temperatures.



Description	Part #	Qty
1" Thermostatic 3-Way Mixing Valve, 85-120 F, 3 cv	62940	1
3/4" Thermostatic 3-Way Mixing Valve, 110-140 F, 1.9 cv	62934	1

Controls

Snowmelt Sensor 33550 series



Description	Part #	Qty
Dual Sensor Snowmelt Control Only	33550	1
Supply/Return Sensor for 33550 modulating mode 2 Req'd	33555	1

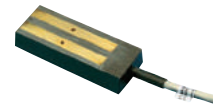


#33551

Description	Part #	Qty
Ground Sensor	33551	1
Outdoor Air Sensor	33552	1
Gutter Sensor	33553	1
Cup for Ground Sensor	33556	1



#33552



#33553



#33565

Description	Part #	Qty
Snowmelt Relay With Integrated Sensor	33565	1
Snowmelt Relay With 10 Ft Remote Sensor	33570	1



#33570

ProMix 1" Manifolds

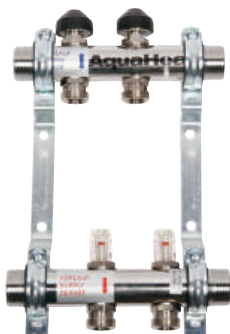
ProMix 1" Manifold Kits 2013 series

ProMix 1" Stainless steel modular manifolds operate with a maximum of 194-degree water temperature and 87 psi operating pressure with a flowmeter range of 0-2 gpm. All manifolds come with flow meters with integrated shut off stems providing positive shut off for loop isolation during charging and testing. Total maximum flow rate 14 GPM.



Description	Part #	Qty
2 Port 1" Stainless Steel Flow Balancing Manifold Kit (Valves, Gauges, Vents)	20132	1
3 Port 1" Stainless Steel Flow Balancing Manifold Kit (Valves, Gauges, Vents)	20133	1
4 Port 1" Stainless Steel Flow Balancing Manifold Kit (Valves, Gauges, Vents)	20134	1
5 Port 1" Stainless Steel Flow Balancing Manifold Kit (Valves, Gauges, Vents)	20135	1
6 Port 1" Stainless Steel Flow Balancing Manifold Kit (Valves, Gauges, Vents)	20136	1
7 Port 1" Stainless Steel Flow Balancing Manifold Kit (Valves, Gauges, Vents)	201307	1
8 Port 1" Stainless Steel Flow Balancing Manifold Kit (Valves, Gauges, Vents)	201308	1
9 Port 1" Stainless Steel Flow Balancing Manifold Kit (Valves, Gauges, Vents)	201309	1
10 Port 1" Stainless Steel Flow Balancing Manifold Kit (Valves, Gauges, Vents)	201301	1

ProMix 1" Manifold (only) 2013 series



Description	Part #	Qty
2 Port 1" Stainless Steel Flow Balancing Manifold	20137	1
3 Port 1" Stainless Steel Flow Balancing Manifold	20138	1
4 Port 1" Stainless Steel Flow Balancing Manifold	20139	1
5 Port 1" Stainless Steel Flow Balancing Manifold	201310	1
6 Port 1" Stainless Steel Flow Balancing Manifold	201311	1

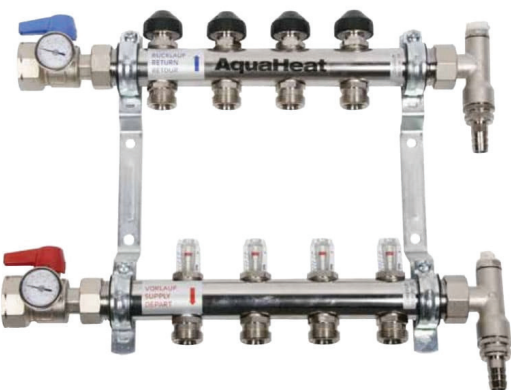
ProMix 1 1/4" Manifolds

ProMix 1 1/4" Manifold Kits 201500 series

ProMix 1 1/4" Stainless steel modular manifolds operate with a maximum of 194-degree water temperature and 87 psi operating pressure with a flowmeter range of 0-4 gpm. Total maximum flow rate 19 GPM.

Description	Part #	Qty
2 Port 1 1/4" Stainless Steel Flow Balancing Manifold Kit (Valves, Gauges, Vents)	20152	1
3 Port 1 1/4" Stainless Steel Flow Balancing Manifold Kit (Valves, Gauges, Vents)	20153	1
4 Port 1 1/4" Stainless Steel Flow Balancing Manifold Kit (Valves, Gauges, Vents)	20154	1
5 Port 1 1/4" Stainless Steel Flow Balancing Manifold Kit (Valves, Gauges, Vents)	20155	1
6 Port 1 1/4" Stainless Steel Flow Balancing Manifold Kit (Valves, Gauges, Vents)	20156	1
7 Port 1 1/4" Stainless Steel Flow Balancing Manifold Kit (Valves, Gauges, Vents)	201507	1
8 Port 1 1/4" Stainless Steel Flow Balancing Manifold Kit (Valves, Gauges, Vents)	201508	1
9 Port 1 1/4" Stainless Steel Flow Balancing Manifold Kit (Valves, Gauges, Vents)	201509	1
10 Port 1 1/4" Stainless Steel Flow Balancing Manifold Kit (Valves, Gauges, Vents)	201501	1

AquaHeat



ProMix 1 1/4" Manifold (only) 201500 series

Description	Part #	Qty
2 Port 1 1/4" Stainless Steel Flow Balancing Manifold	20157	1
3 Port 1 1/4" Stainless Steel Flow Balancing Manifold	20158	1
4 Port 1 1/4" Stainless Steel Flow Balancing Manifold	20159	1
5 Port 1 1/4" Stainless Steel Flow Balancing Manifold	201510	1
6 Port 1 1/4" Stainless Steel Flow Balancing Manifold	201511	1



Control Module / By-Pass Set

Manifold Control Module **201344 series



This ProMix manifold extension controls the 2013 series manifold supply water temperature by mixing supply and return water and limits the supply temperature flow through the manifold for wooden flooring. The integrated pressure by-pass relief allows to operate the manifold directly off a high-temperature primary heating circuit or boiler with a maximum heating capac-ity of 51,000 BTU/h.

Connection of pumps is provided through 1 1/4" BSP Unions. Suitable pump length 5 1/8" (130mm). Maximum operating temperature 190 °F, maximum operating pressure 145 psi, tem-perature setting range 113 °F - 140 °F, injection valve is preset at 131 °F.

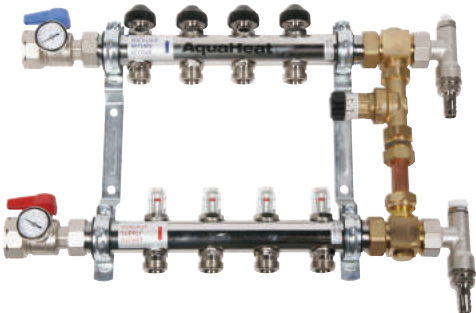
Description	Part #	Qty
Promix 1" Isotherm Manifold Control Module w 451558 pump	201344	1

Manifold By-Pass Set 201345 series

Differential pressure by-pass set can be installed directly onto the ProMix series 1" manifolds (2013 series) and can be adapted to fit 1 1/4" (2015 series). The manifold by-pass set allows for constant pressure in individual manifold loops or zones independent of the count of open zone valves.



Description	Part #	Qty
Promix 1" Differential Manifold By-Pass Set	201345	1



ProMix Manifold Accessories

ProMix Manifold Coupling Kits



Allows you to couple two manifolds together when you have a manifold location requiring more than six zones. Example: combine two four port manifolds into an eight port.

Description	Part #	Qty
1" Manifold Coupling Kit (2)	201359	1
1 1/4" Manifold Coupling Kit (2)	201558	1

ProMix Manifold Elbow Kits



Elbow kits allow for a compact 90-degree turn making it very easy to connect vertical sup-ply and return pipes.

Description	Part #	Qty
1" Manifold Elbow Kit (2)	201360	1
1 1/4" Manifold Elbow Kit (2)	201559	1

ProMix Manifold Extension Sets



The extension set makes it very simple to add a zone to an existing manifold.

Description	Part #	Qty
1" Manifold Extension Set w/ Flow Supply & Return	201342	1

ProMix End Sets w/ Hose adapter



Description	Part #	Qty
1" Female BSP Manifold End Set w/ Garden Hose thread (2)	201364	1
1 1/4" Female BSP Manifold End Set w/ Garden Hose thread (2)	201565	1

ProMix Manifold Accessories

ProMix Manifold End-Cap Kits



Description	Part #	Qty
1" Manifold End-Cap Kit (2)	201361	1
1 1/4" Manifold End-Cap Kit(2)	201561	1

ProMix Multi-Purpose End Kits



Description	Part #	Qty
1" Manifold Multi-Purpose End Kit w/ vent and charging port (2)	201363	1
1 1/4" Manifold Multi-Purpose End Kit w/ vent and charging port (2)	201563	1

ProMix Manifold Ball Valve



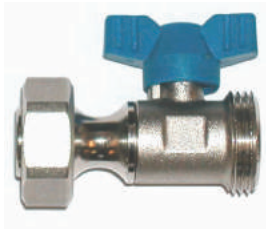
Description	Part #	Qty
1" Manifold Ball Valve Kit (2)	201362	1
1 1/4" Manifold Ball Valve Kit (2)	201562	1

ProMix NPT Balancing Valve



Description	Part #	Qty
1" NPT Balancing Valve 1- 13 GPM	201450	1
1 1/4" NPT Balancing Valve 2- 21 GPM	201451	1

ProMix 3/4" Eurocone Mini Ball Valve



Description	Part #	Qty
3/4" Eurocone Mini Ball Valve	201340	1

Provides positive shutoff and isolation of loops on 2013 and 2015 manifolds

ProMix Manifold Accessories

ProMix Manifold Fitting Series



Note: 10 Bags Per Box



Description	Part #	Qty/bag
3/8" PEX Pipe to Manifold (2013 & 2015) Supply & Return Fittings (pair)	201338	1
1/2" PEX Pipe to Manifold (2013 & 2015) Supply & Return Fittings (pair)	201312	1
5/8" PEX Pipe to Manifold (2013 & 2015) Supply & Return Fittings (pair)	201358	1
3/4" PEX Pipe to Manifold (2013 & 2015) Supply & Return Fittings (pair)	201334	1
3/4" Eurocone Replacement O-Ring	201300	10/pk
3/4" Eurocone Coupling	201332	1

ProMix Manifold Gasket Series



Description	Part #	Qty
1" Manifold Gasket	201305	1
1 1/4" Manifold Gasket	201520	1

ProMix Auto Air Vent



Description	Part #	Qty
3/8" BSP Auto Air Vent	201210	1

ProMix Replacement Flow Indicator



Description	Part #	Qty
Replacement Flow Indicator 0-2 GPM	201114	1
Replacement Flow Indicator 0-4 GPM	201214	1

ProMix Eurocone



Description	Part #	Qty
3/4" Eurocone Blank Cap w/ Gasket	201595	1

Replacement Temp Gauge



Description	Part #	Qty
Replacement Manifold Temperature Gauge	201502	1

- BRAZED JOINT, TYPE L COPPER MANIFOLDS FOR RADIANT HEATING AND PEX PLUMBING
- 72" CUT-TO-LENGTH HEADERS AVAILABLE WITH ALL POPULAR CONNECTIONS - 1" THRU 2" TRUNK SIZE
- ALL LEAD-FREE SOLDER JOINTS AND 10 YEAR LIMITED WARRANTY



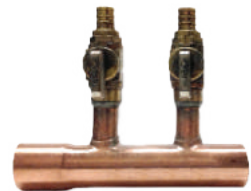
PART #	DESCRIPTION	QTY
72105	CUT TO SIZE 72"; 1" MS ENDS W/ (24) 1/2" MS PORTS 3" ON CENTER	20
72205	CUT TO SIZE 72"; 1-1/4" MS ENDS W/ (24) 1/2" MS PORTS 3" ON CENTER	12
72122	CUT TO SIZE 72"; 1" MS ENDS W/ (24) 3/4" MS PORTS 3" ON CENTER	8
72222	CUT TO SIZE 72"; 1-1/4" MS ENDS W/ (24) 3/4" MS PORTS 3" ON CENTER	4
72322	CUT TO SIZE 72"; 1-1/2" MS ENDS W/ (24) 3/4" MS PORTS 3" ON CENTER	6
72422	CUT TO SIZE 72"; 2" MS ENDS W/ (24) 3/4" MS PORTS 3" ON CENTER	4
72106	CUT TO SIZE 72"; 1" MS ENDS W/ (24) 1/2" F1807 PEX PORTS 3" ON CENTER	24
72107	CUT TO SIZE 72"; MS ENDS W/ (24) 1/2" F1960 PEX PORTS 3" ON CENTER	24
72108	CUT TO SIZE 72"; MS ENDS W/ (24) 1/2" F1960 VALVED PORTS 3" ON CENTER	24

ASTM 1807 CRIMP MANIFOLD



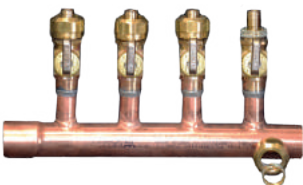
PART #	DESCRIPTION	QTY
40132	1" COPPER CLOSED END W/ 1/2" CRIMP 2 PORT HEADER	20
40133	1" COPPER CLOSED END W/ 1/2" CRIMP 3 PORT HEADER	20
40134	1" COPPER CLOSED END W/ 1/2" CRIMP 4 PORT HEADER	20
40135	1" COPPER CLOSED END W/ 1/2" CRIMP 5 PORT HEADER	20
40136	1" COPPER CLOSED END W/ 1/2" CRIMP 6 PORT HEADER	20
40137	1" COPPER CLOSED END W/ 1/2" CRIMP 7 PORT HEADER	10
40138	1" COPPER CLOSED END W/ 1/2" CRIMP 8 PORT HEADER	10

ASTM 1807 CRIMP MANIFOLD WITH VALVE



PART #	DESCRIPTION	QTY
41132	1" COPPER SWEAT W/ 1/2" CRIMP BALL VALVE 2 PORT HEADER	10
41133	1" COPPER SWEAT W/ 1/2" CRIMP BALL VALVE 3 PORT HEADER	10
41134	1" COPPER SWEAT W/ 1/2" CRIMP BALL VALVE 4 PORT HEADER	10
41135	1" COPPER SWEAT W/ 1/2" CRIMP BALL VALVE 5 PORT HEADER	10
41136	1" COPPER SWEAT W/ 1/2" CRIMP BALL VALVE 6 PORT HEADER	10
41137	1" COPPER SWEAT W/ 1/2" CRIMP BALL VALVE 7 PORT HEADER	5
41138	1" COPPER SWEAT W/ 1/2" CRIMP BALL VALVE 8 PORT HEADER	5

COMPRESSION MANIFOLD WITH VALVE



PART #	DESCRIPTION	QTY
41142	1" COPPER SWEAT W/ 1/2" COMPRESSION VALVE 2 PORT HEADER	20
41143	1" COPPER SWEAT W/ 1/2" COMPRESSION VALVE 3 PORT HEADER	20
41144	1" COPPER SWEAT W/ 1/2" COMPRESSION VALVE 4 PORT HEADER	20
41145	1" COPPER SWEAT W/ 1/2" COMPRESSION VALVE 5 PORT HEADER	20
41146	1" COPPER SWEAT W/ 1/2" COMPRESSION VALVE 6 PORT HEADER	20
41147	1" COPPER SWEAT W/ 1/2" COMPRESSION VALVE 7 PORT HEADER	10
41148	1" COPPER SWEAT W/ 1/2" COMPRESSION VALVE 8 PORT HEADER	10

Copper Manifolds

ASTM 1960 EXPANSION MANIFOLD



PART #	DESCRIPTION	QTY
41152	1" COPPER SWEAT W/ 1/2" F1960LF FITTING 2 PORT HEADER	20
41153	1" COPPER SWEAT W/ 1/2" F1960LF FITTING 3 PORT HEADER	20
41154	1" COPPER SWEAT W/ 1/2" F1960LF FITTING 4 PORT HEADER	20
41155	1" COPPER SWEAT W/ 1/2" F1960LF FITTING 5 PORT HEADER	20
41156	1" COPPER SWEAT W/ 1/2" F1960LF FITTING 6 PORT HEADER	20
41157	1" COPPER SWEAT W/ 1/2" F1960LF FITTING 7 PORT HEADER	10
41158	1" COPPER SWEAT W/ 1/2" F1960LF FITTING 8 PORT HEADER	10

ASTM 1960 EXPANSION MANIFOLD WITH VALVE



PART #	DESCRIPTION	QTY
40152	1" COPPER SWEAT W/ 1/2" F1960LF VALVE 2 PORT HEADER	20
40153	1" COPPER SWEAT W/ 1/2" F1960LF VALVE 3 PORT HEADER	20
40154	1" COPPER SWEAT W/ 1/2" F1960LF VALVE 4 PORT HEADER	20
40155	1" COPPER SWEAT W/ 1/2" F1960LF VALVE 5 PORT HEADER	20
40156	1" COPPER SWEAT W/ 1/2" F1960LF VALVE 6 PORT HEADER	20
40157	1" COPPER SWEAT W/ 1/2" F1960LF VALVE 7 PORT HEADER	10
40158	1" COPPER SWEAT W/ 1/2" F1960LF VALVE 8 PORT HEADER	10

DRAIN/VENT END CAPS



PART #	DESCRIPTION	QTY
40100	1" FS X CLSD END CAP W/ 1/8" FIPTAP FOR VENT & 1/2" FIP DRAIN	50
40125	1-1/4" FS X CLSD END CAP W/ 1/8" FIP FOR VENT & 1/2" FIP DRAIN	30
40150	1-1/2" FS X CLSD END CAP W/ 1/8" FIP FOR VENT & 1/2" FIP DRAIN	30
40200	2" FS X CLSD END CAP W/ 1/8" FIP FOR VENT & 1/2" FIP DRAIN	15

GAUGE TEE



PART #	DESCRIPTION	QTY
41100	1" FS X 1" MS X 1/2" FIP THERMOMETER GAUGE TEE	50
41125	1-1/4" FS X 1-1/4" MS X 1/2" FIP THERMOMETER GAUGE TEE	40
41150	1-1/2" FS X 1-1/2" MS X 1/2" FIP THERMOMETER GAUGE TEE	30
41200	2" FS X 2" MS X 1/2" FIP THERMOMETER GAUGE TEE	15



Controls by SALUS

- Full line of wired and wireless controls for the Radiant and HVAC industry
- Manufactured by one of the largest thermostat manufacturers in the world
- App integrated wireless thermostats and controls to compete in the tech savvy market
- Replaces all current CPS thermostats and controls stats and controls



WIRED CONTROLS	CPS Part
24 VAC Thermal Actuator Normally Closed (2 Wire)	46002
24 VAC Thermal Actuator Normally Closed with End Switch (4 Wire)	46003
8 Zone 120 VAC In and 24 VAC Output Wiring Center	46008
24 VAC Digital Non Programmable Thermostat (3 Wire)	46010
Floor/Slab Temperature Sensor	46011
24 VAC Underfloor Hydronic Auto Balancing Actuator	46012
24 VAC Digital Programmable Thermostat (3 Wire)	46013
1 Zone Pump Control	46001
4 Zone Pump Control	46004
6 Zone Pump Control	New Item 46006

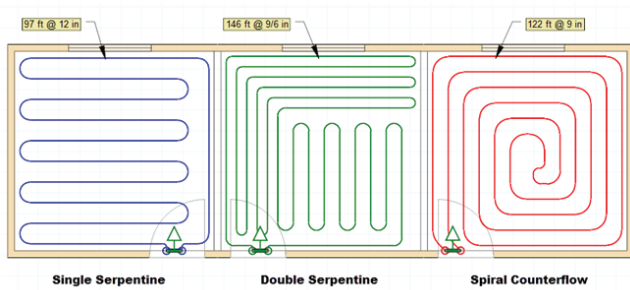
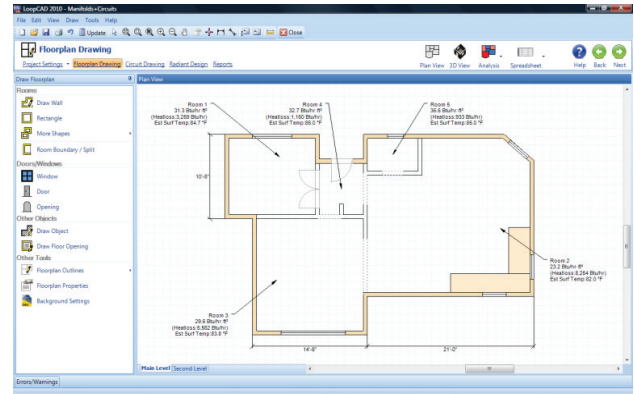


WIRELESS CONTROLS	CPS Part
Wireless Radiant Thermostat	46020
1 Zone Wireless Pump Control	46021
4 Zone Wireless Pump Control	46024
8 Zone 120 VAC In and 24 VAC output Wireless Wiring Center	46028
Wireless Radiator Valve Actuator - Hot Water	46027
24 VAC Wireless Zigbee Receiver	46029
Universal Gateway + USA Plug, White	46025

"The premiere software for the fast creation of professional quality circuit layout drawing for radiant heating systems."

Floorplan Drawing

Creating floorplan drawings is very fast using the predefined rooms, doors, windows and other objects. Rooms can be resized by dragging the walls or corners, and they are easily docked together to create complex floor plans. The room shapes can be quickly edited to create very complex shapes, and you can also use the freehand drawing tools to create more complex shapes. LoopCAD also allows you to import an existing AutoCAD*, PDF** or scanned drawings to use as a template.



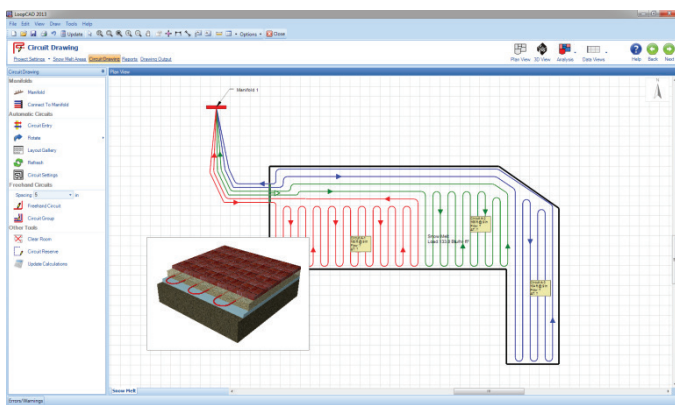
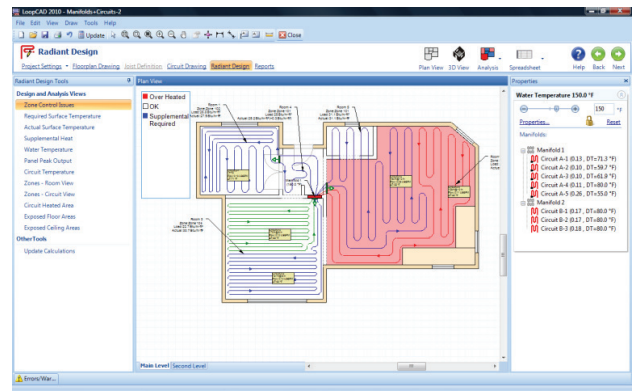
Automated Circuit Drawing

LoopCAD automatically generates circuits for the rooms in your project. Simply drop a Circuit Entry object where you want the circuits to start, and LoopCAD takes care of the rest. It automatically designs around obstructions, like stairs, cabinets or kitchen islands. Easily edit the settings to change the pattern type, rotation, number of circuits, or tube spacing options. And use the powerful Layout Gallery tool to quickly select the best pattern for your design. For room geometries too complex for automated circuits, the freehand circuit tools let you quickly draw the exact circuits that you want.

Hydronic Calculations

The hydronic calculations that are critical to your radiant system design are performed automatically. And the Radiant Design view provides an easy way to analyze and optimize your design.

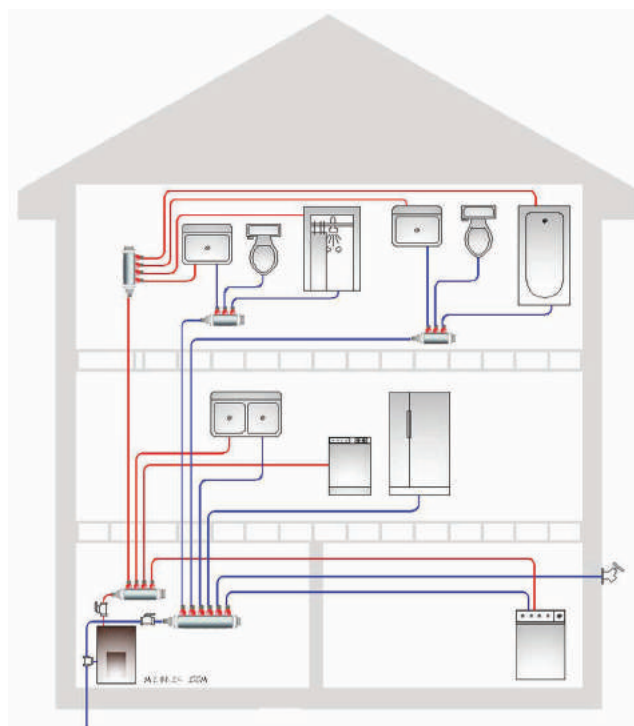
- Panel heat outputs
- Surface temperatures
- Panel temperatures
- Water temperatures – supply and differential
- Flow rates and head losses
- Controllability/Issues



Snowmelt Design

Snowmelt system design is now directly supported in LoopCAD. Draw snowmelt areas, generate circuits, calculate loads and temperatures in much the same way as you do for radiant heating systems. Calculations are based on ASHRAE methods.

Pex-A and Pex-B in red, blue, and natural colors in a variety of lengths make plumbing with pex fast and easy.



Home Run method shown.

NEW ASTM F-1960
Cold Expansion System

- * Cost Effective
- * Labor Saving
- * Tamper Proof

AquaSeal Advantages

- * Plenum Rated - May be run in drop ceilings and chases
- Totally clean, lead free freeze protection
- Flexible - bends easily making installations quicker
- Resists corrosive water and scaling
- Fewer fittings
- Quiet - no water hammer noise
- Equalized pressure drops, minimize hot or cold surges
- Can easily be repaired if pipe is kinked
- Durable/long life
- 25 year limited warranty
- Labor costs reduced by up to 40%
- Lightweight
- Approved for continuous re-circulation of hot water
- Fire stop caulk compatible

Limitations on AquaSeal

- Should not be exposed to open flame.
- Should not be permanently exposed to UV light
- Should not use glue or any material that affects the basic properties of cross linked polyethylene.
- Should not be used in excess of 180°F and 100psi.
- Should not install within 6" of any gas appliance vent piping, or within 12" of any recessed light fixtures.
- Should not solder pipe connections within 16" of any AquaSeal pipe in the same water line.
- Should not come into contact with low molecular weight petroleum products such as fuels or solvents.
- Should not be used for LP or natural gas.
- For best results installation of fittings should be made above 40 degrees F

AquaSeal Connection Options

- Cold Expansion Rings
- Stainless Press Sleeves
- Pinchlock Clamps
- Copper Crimp Rings

PEX - A Pipe

Blue Pipe PEX-A 20000A series



Description	Part #	Qty / Coil Length
Blue Pex-A 1/2" X 20'	20205A	20 / bag
Blue Pex-A 1/2" X 100'	20105A	100'
Blue Pex-A 1/2" X 300'	20305A	300'
Blue Pex-A 1/2" X 1000'	20905A	1000'
Blue Pex-A 3/4" X 20'	20222A	10 / bag
Blue Pex-A 3/4" X 100'	20122A	100'
Blue Pex-A 3/4" X 300'	20322A	300'
Blue Pex-A 1" X 20'	20228A	5 / bag
Blue Pex-A 1" X 100'	20128A	100'

Red Pipe PEX-A 21000A series



Description	Part #	Qty / Coil Length
Red Pex-A 1/2" X 20'	21205A	20 / bag
Red Pex-A 1/2" X 100'	21105A	100'
Red Pex-A 1/2" X 300'	21305A	300'
Red Pex-A 1/2" X 1000'	21905A	1000'
Red Pex-A 3/4" X 20'	21222A	10 / bag
Red Pex-A 3/4" X 100'	21122A	100'
Red Pex-A 3/4" X 300'	21322A	300'
Red Pex-A 1" X 20'	21228A	5 / bag
Red Pex-A 1" X 100'	21128A	100'

Natural PEX-A 92000 series



Description	Part #	Coil Length
Natural Pex-A 1/2" X 20'	92205	20/bag
Natural Pex-A 1/2" X 100'	92105	100'
Natural Pex-A 1/2" X 300'	92305	300'
Natural Pex-A 1/2" X 1000'	92905	1000'
Natural Pex-A 3/4" X 20'	92222	10 / bag
Natural Pex-A 3/4" X 100'	92122	100'
Natural Pex-A 3/4" X 300'	92322	300'
Natural Pex-A 1" X 20'	92228	5 / bag
Natural Pex-A 1" X 100'	92128	100'
Natural Pex-A 1" X 300'	92328	300'

PEX-A Pipe SDR-9

PEX-A Piping 99900 series SDR-9



Description	Part #	Qty
PEX-A 1-1/4" X 20' SDR-9 Pipe	99942	5/bag
PEX-A 1-1/4" X 100' SDR-9 Pipe	99940	1
PEX-A 1-1/4" X 100 ' SDR-9 Pipe	99943	1
PEX-A 1-1/2" X 20' SDR-9 Pipe	99952	5/bag
PEX-A 1-1/2" X 100' SDR-9 Pipe	99950	1
PEX-A 1-1/2" X 300' SDR-9 Pipe	99953	1
PEX-A 2" X 20' SDR-9 Pipe	99962	5/bag
PEX-A 2" X 100' SDR-9 Pipe	99963	1

AquaSeal

PEX - B Pipe

Blue Pipe PEX-B 20000 series



Description	Part #	Qty / Coil Length
Blue Pex-B 1/2" X 20'	20205	50 / bag
Blue Pex-B 1/2" X 100'	20105	100'
Blue Pex-B 1/2" X 300'	20305	300'
Blue Pex-B 1/2" X 500' New Item	20505	500'
Blue Pex-B 1/2" X 1000'	20905	1000'
Blue Pex-B 3/4" X 20'	20222	25 / bag
Blue Pex-B 3/4" X 100'	20122	100'
Blue Pex-B 3/4" X 300'	20322	300'
Blue Pex-B 3/4" X 500' New Item	20522	500'
Blue Pex-B 1" X 20'	20228	15 / bag
Blue Pex-B 1" X 100'	20128	100'
Blue Pex-B 1" X 300'	20328	300'
Blue Pex-B 1" X 500' New Item	20528	500'

Red Pipe PEX-B 21000 series



Description	Part #	Qty / Coil Length
Red Pex-B 1/2" X 20'	21205	50 / bag
Red Pex-B 1/2" X 100'	21105	100'
Red Pex-B 1/2" X 300'	21305	300'
Red Pex-B 1/2" X 500' New Item	21505	500'
Red Pex-B 1/2" X 1000'	21905	1000'
Red Pex-B 3/4" X 20'	21222	25 / bag
Red Pex-B 3/4" X 100'	21122	100'
Red Pex-B 3/4" X 300'	21322	300'
Red Pex-B 3/4" X 500' New Item	21522	500'
Red Pex-B 1" X 20'	21228	15 / bag
Red Pex-B 1" X 100'	21128	100'
Red Pex-B 1" X 300'	21328	300'
Red Pex-B 1" X 500' New Item	21528	500'

White Pipe PEX-B 29000 series



Description	Part #	Coil Length
White Pex-B 1/2" X 20'	29205	50 / bag
White Pex-B 1/2" X 100'	29105	100'
White Pex-B 1/2" X 300'	29305	300'
White Pex-B 1/2" X 500' New Item	29505	500'
White Pex-B 1/2" X 1000'	29905	1000'
White Pex-B 3/4" X 20'	29222	25 / bag
White Pex-B 3/4" X 100'	29122	100'
White Pex-B 3/4" X 300'	29322	300'
White Pex-B 3/4" X 500' New Item	29522	500'
White Pex-B 1" X 20'	29228	15 / bag
White Pex-B 1" X 100'	29128	100'
White Pex-B 1" X 300'	29328	300'

Fittings - F1960 Brass

AquaSeal cold expansion F1960 lead free brass fittings conform to ASTM F877, F1960, NSF-61 PW-G, CAN/CSA B137.5 standards.

Pex Sleeves



Description	Part #	Qty / Bag
1/2" F1960 PEX Ring	39175	50
3/4" F1960 PEX Ring	39133	25
1" F1960 PEX Ring	39169	10
Description	Part #	Qty / Bag
1 1/4" F1960 Pex Sleeve	39143	10
1 1/2" F1960 Pex Sleeve	39150	10
2" F1960 Pex Sleeve	39160	10

Elbows



Description	Part #	Qty / Bag
1/2" F1960 x 1/2" F1960 Elbow NL	39192	50
3/4" F1960 x 3/4" F1960 Elbow NL	39194	25
1" F1960 x 1" F1960 Elbow NL	39191	10
3/4" F1960 x 3/4" CU Male (Fitting) Elbow NL	39193	25
3/4" F1960 x 3/4" CU Female (Sweat) Elbow NL	39196	25
1/2" F1960 x 1/2" FIP Drop Ear 90 NL	39195	25
1/2" F1960 x 4x8" Stub Out Elbow	39102	25

Tees



Description	Part #	Qty / Bag
1/2" F1960 x 1/2" F1960 x 1/2" F1960 Tee NL	39132	50
3/4" F1960 x 3/4" F1960 x 3/4" F1960 Tee NL	39136	25
1" F1960 x 1" F1960 x 1" F1960 Tee NL	39188	10
Description	Part #	Qty / Bag
1/2" F1960 x 1/2" F1960 x 3/4" F1960 Tee NL	39157	25
3/4" F1960 x 1/2" F1960 x 1/2" F1960 Tee NL	39178	25
3/4" F1960 x 1/2" F1960 x 3/4" F1960 Tee NL	39162	25
3/4" F1960 x 3/4" F1960 x 1/2" F1960 Tee NL	39165	25
3/4" F1960 x 3/4" F1960 x 1" F1960 Tee NL	39167	10
1" F1960 x 3/4" F1960 x 3/4" F1960 Tee NL	39135	10
1" F1960 x 1" F1960 x 1/2" F1960 Tee NL	39182	10
1" F1960 x 1" F1960 x 3/4" F1960 Tee NL	39184	10

Fittings - F1960 No Lead Brass

Couplings



Description	Part #	Qty / Bag
1/2" F1960 x 1/2" F1960 Coupling NL	39115	50
3/4" F1960 x 3/4" F1960 Coupling NL	39122	25
1" F1960 x 1" F1960 Coupling NL	39128	5
3/4" F1960 x 1/2" F1960 Coupling NL	39125	25
1" F1960 x 3/4" F1960 Coupling NL	39126	10

Male Sweat Adapter



Description	Part #	Qty/Bag
1/2" F1960 x 1/2" CU Male (Fitting) NL	39105	50
3/4" F1960 x 1/2" CU Male (Fitting) NL	39112	25
3/4" F1960 x 3/4" CU Male (Fitting) NL	39134	25
3/4" F1960 x 1" CU Male (Fitting) NL	39108	10
1" F1960 x 1" Male Sweat Adapter	39101	1
1 1/4" F1960 x 1 1/4" Male Sweat Adapter	39145	1
1 1/2" F1960 x 1 1/2" Male Sweat Adapter	39151	1
2" F1960 x 2" Male Sweat Adapter	39161	1

Female Sweat Adapter



Description	Part #	Qty / Bag
1/2" F1960 x 1/2" CU Female (Sweat) NL	39124	50
1/2" F1960 x 3/4" CU Female (Sweat) NL	39129	25
3/4" F1960 x 1/2" CU Female (Sweat) NL	39127	25
3/4" F1960 x 3/4" CU Female (Sweat) NL	39123	25
3/4" F1960 x 1" CU Female (Sweat) NL	39130	10
1" F1960 x 1" CU Female (Sweat) NL	39111	10
1 1/4" F1960 x 1 1/4" Female Sweat Adapter	39146	1
1 1/2" F1960 x 1 1/2" Female Sweat Adapter	39154	1
2" F1960 x 2" Female Sweat Adapter	39166	1

Fittings - F1960 Brass

MPT Adapters



Description	Part #	Qty / Bag
1/2" F1960 x 1/2" MPT Adapter NL	39106	50
3/4" F1960 x 3/4" MPT Adapter NL	39138	25
3/4" F1960 x 1" MPT Adapter NL	39131	10
1" F1960 x 1" MPT Adapter NL	39110	10
1 1/4" F1960 x 1 1/4" MPT Adapter	39147	1
1 1/2" F1960 x 1 1/2" MPT Adapter	39156	1
2" F1960 x 2" MPT Adapter	39163	1

FPT Adapter



Description	Part #	Qty / Bag
1/2" F1960 x 1/2" FPT Adapter NL	39120	50
3/4" F1960 x 1/2" FPT Adapter NL	39142	25
3/4" F1960 x 3/4" FPT Adapter NL	39144	25
3/4" F1960 x 1" FPT Adapter NL	39141	10
1" F1960 x 1" FPT Adapter NL	39140	10
1 1/4" F1960 x 1 1/4" FPT Adapter	39148	1
1 1/2" F1960 x 1 1/2" FPT Adapter	39159	1
2" F1960 x 2" FPT Adapter	39168	1

Plugs



Description	Part #	Qty / Bag
1/2" F1960 x Plug NL	39155	50
3/4" F1960 x Plug NL	39152	25
1" F1960 x Plug NL	39158	10

Ball Valves



Description	Part #	Qty / Bag
1/2" F1960 Full Port Ball Valve NL	39197	1
3/4" F1960 Full Port Ball Valve NL	39198	1
1" F1960 Full Port Ball Valve NL	39199	1

Fittings - F1960 Plastic Poly

AquaSeal cold expansion F1960 Plastic Poly fittings conform to ASTM F877, F1960, NSF-61 PW-G, CAN/CSA B137.5 standards.

Elbows



Description	Part #	Qty / Bag
Poly 1/2" F1960 x 1/2" F1960 Elbow	39292	25
Poly 3/4" F1960 x 3/4" F1960 Elbow	39294	25
Poly 1" F1960 x 1" F1960 Elbow	39291	10

Description	Part #	Qty / Bag
Poly 1 1/4" x 1 1/4" F1960 90 Degree Elbow	39293	1
Poly 1 1/2" x 1 1/2" F1960 90 Degree Elbow	39295	1
Poly 2" x 2" F1960 90 Degree Elbow	39296	1

Couplings



Description	Part #	Qty / Bag
Poly 1/2" F1960 x 1/2" F1960 Coupling	39215	25
Poly 3/4" F1960 x 3/4" F1960 Coupling	39222	25
Poly 1" F1960 x 1" F1960 Coupling	39228	25
Poly 1 1/4" F1960 x 1 1/4" F1960 Coupling	39340	1
Poly 1 1/2" F1960 x 1 1/2" F1960 Coupling	39227	1
Poly 2" F1960 x 2" F1960 Coupling	39260	1

Reducing Couplings



New Item

Poly 3/4" F1960 x 1/2" F1960 Coupling	39227	25
Poly 1" F1960 x 1/2" F1960 Coupling	39326	10
Poly 1" F1960 x 3/4" F1960 Coupling	39229	10
Poly 1 1/4" F1960 x 3/4" F1960 Coupling	39242	1
Poly 1 1/4" F1960 x 1" F1960 Coupling	39241	1
Poly 1 1/2" F1960 x 1" F1960 Coupling	39253	1
Poly 1 1/2" F1960 x 1 1/4" F1960 Coupling	39251	1
Poly 1 1/2" F1960 x 1" F1960 Coupling	39253	1
Poly 2" F1960 x 1 1/2" F1960 Coupling	39261	1

Plugs



Description	Part #	Qty / Bag
Poly 1/2" F1960 Plug	39255	25
Poly 3/4" F1960 Plug	39252	25
Poly 1" F1960 Plug	39258	10
Poly 1 1/4" F1960 Plug	39254	1
Poly 1 1/2" F1960 Plug	39256	1
Poly 2" F1960 Plug	39259	1

MPT Adapters



Description	Part #	Qty / Bag
1/2" F1960 x 1/2" MPT Adapter	39206	25
3/4" F1960 x 3/4" MPT Adapter	39238	25

Fittings - F1960 Plastic Poly

AquaSeal cold expansion F1960 Plastic Poly fittings conform to ASTM F877, F1960, NSF-61 PW-G, CAN/CSA B137.5 standards.

Tees



Description	Part #	Qty / Bag
Poly 1/2" F1960 x 1/2" F1960 x 1/2" F1960 Tee	39232	25
Poly 3/4" F1960 x 3/4" F1960 x 3/4" F1960 Tee	39236	25
Poly 1" F1960 x 1" F1960 x 1" F1960 Tee	39288	10
Poly 1 1/4" F1960 x 1 1/4" F1960 x 1 1/4" F1960 Tee	39200	1
Poly 1 1/2" F1960 x 1 1/2" F1960 x 1 1/2" F1960 Tee	39210	1
Poly 2" F1960 x 2" F1960 x 2" F1960 Tee	39220	1

Reduced Tees



Description	Part #	Qty / Bag
Poly 1/2" F1960 x 1/2" F1960 x 3/4" F1960 Tee	39257	25
Poly 3/4" F1960 x 1/2" F1960 x 1/2" F1960 Tee	39278	25
Poly 3/4" F1960 x 1/2" F1960 x 3/4" F1960 Tee	39262	25
Poly 3/4" F1960 x 3/4" F1960 x 1/2" F1960 Tee	39265	25
New Item Poly 3/4" F1960 x 3/4" F1960 x 1" F1960 Tee	39269	10
Poly 1" F1960 x 1" F1960 x 3/4" F1960 Tee	39284	10
Poly 1" F1960 x 1" F1960 x 1/2" F1960 Tee	39285	10
Poly 1" F1960 x 3/4" F1960 x 3/4" F1960 Tee	39244	10
Poly 1" F1960 x 3/4" F1960 x 1" F1960 Tee	39248	10
Poly 1" F1960 x 1/2" F1960 x 1" F1960 Tee	39237	10
Poly 1" F1960 x 3/4" F1960 x 1/2" F1960 Tee	39235	10
Poly 1 1/4" F1960 x 1" F1960 x 1 1/4" F1960 Tee	39201	1
Poly 1 1/4" F1960 x 1 1/4" F1960 x 1/2" F1960 Tee	39202	1
Poly 1 1/4" F1960 x 1 1/4" F1960 x 3/4" F1960 Tee	39203	1
Poly 1 1/4" F1960 x 1 1/4" F1960 x 1" F1960 Tee	39204	1
Poly 1 1/4" x 3/4" F1960 x 1 1/4" F1960 Tee	39208	1
New Item Poly 1 1/4" F1960 x 1" F1960 x 1" F1960 Tee	39209	1
Poly 1 1/2" F1960 x 1 1/4" F1960 x 1 1/4" F1960 Tee	39211	1
Poly 1 1/2" F1960 x 1 1/4" F1960 x 1 1/2" F1960 Tee	39212	1
Poly 1 1/2" F1960 x 1 1/2" F1960 x 3/4" F1960 Tee	39213	1
Poly 1 1/2" F1960 x 1 1/2" F1960 x 1" F1960 Tee	39214	1
Poly 1 1/2" F1960 x 1 1/2" F1960 x 1 1/4" F1960 Tee	39216	1
Poly 1 1/2" F1960 x 3/4" F1960 x 1 1/2" F1960 Tee	39205	1
Poly 1 1/2" F1960 x 1" F1960 x 1 1/2" F1960 Tee	39207	1
New Item Poly 1 1/2" F1960 x 1" F1960 x 1" F1960 Tee	39211	1
Poly 2" F1960 x 1 1/2" F1960 x 2" F1960 Tee	39223	1
Poly 2" F1960 x 2" F1960 x 1" F1960 Tee	39221	1
Poly 2" F1960 x 2" F1960 x 1 1/4" F1960 Tee	39224	1
Poly 2" F1960 x 2" F1960 x 1 1/2" F1960 Tee	39325	1
Poly 2" F1960 x 1" F1960 x 2" F1960 Tee	39217	1
Poly 2" F1960 x 1 1/4" F1960 x 2" F1960 Tee	39218	1
New Item Poly 2" F1960 x 1 1/2" F1960 x 1 1/2" F1960 Tee	39219	1
New Item Poly 2" F1960 x 2" F1960 x 1/2" F1960 Tee	39305	1
New Item Poly 2" F1960 x 2" F1960 x 3/4" F1960 Tee	39307	1

Fittings - F-1807 Brass

AquaSeal lead free brass fittings are manufactured to ASTM F1807 and CSA B137.5 standards and approved by CSA, IAPMO and NSF.

Elbows 38000 series



Description	Part #	Qty / Bag
3/8" Lead Free Brass Barbed Elbow	38012	25
1/2" Lead Free Brass Barbed Elbow	38005	25
3/4" Lead Free Brass Barbed Elbow	38022	25
1" Lead Free Brass Barbed Elbow	38028	15
3/4" x 1/2" Lead Free Brass Barb Elbow	38225	25
1-1/4" Lead Free Brass Barb Elbow	38040	1
1-1/2" Lead Free Brass Barb Elbow	38050	1
2" Lead Free Brass Barb Elbow	38063	1

Barbed Tees 36200 - 36800 series



Description	Part #	Qty / Bag
1/2" Lead Free Brass Barb Tee	36555	25
3/4" Lead Free Brass Barb Tee	36222	25
1" Lead Free Brass Barb Tee	36888	15
1-1/4" Lead Free Brass Barb Tee	36040	1
1-1/2" Lead Free Brass Barb Tee	36050	1
2" Lead Free Brass Barb Tee	36022	1

Brass Reducing Tees



Description	Part #	Qty / Bag
3/4" x 3/4" x 1/2" Lead Free Brass Barb Tee	36225	25
3/4" x 1/2" x 3/4" Lead Free Brass Barb Tee	36252	25
3/4" x 1/2" x 1/2" Lead Free Brass Barb Tee	36255	25
1/2" x 1/2" x 3/4" Lead Free Brass Barb Tee	36552	25
1" x 3/4" x 3/4" Lead Free Brass Barb Tee	36822	15
1" x 1" x 1/2" Lead Free Brass Barb Tee	36885	15
1" x 1" x 3/4" Lead Free Brass Barb Tee	36882	15
1-1/4" x 1-1/4" x 3/4" Lead Free Brass Barb Tee	36443	1
1 1/4" x 1 1/4" x 1/2" LF Tee	36445	1
1 1/4" x 1 1/4" x 1" LF Tee	36448	1
1-1/2" x 1-1/2" x 3/4" Lead Free Brass Barb Tee	36553	1
1 1/2" x 1 1/2" x 1" LF Tee	36558	1
1-1/2" x 1-1/2" x 1-1/4" Lead Free Brass Barb Tee	36554	1
2" x 2" x 1" Lead Free Brass Barb Tee	36221	1
2" x 1-1/4" x 1-1/4" Lead Free Brass Barb Tee	36244	1
2" x 1-1/2" x 1-1/4" Lead Free Brass Barb Tee	36254	1
2" x 2" x 1-1/4" Lead Free Brass Barb Tee	36224	1
2" x 2" x 1-1/2" Lead Free Brass Barb Tee	36226	1
2" x 1-1/2" x 1-1/2" Lead Free Brass Barb Tee	36256	1

Fittings - F-1807 Brass

Couplings 39000 series



Description	Part #	Qty / Bag
3/8" Lead Free Brass Barb Coupling	39012	25
1/2" Lead Free Brass Barb Coupling	39005	25
3/4" Lead Free Brass Barb Coupling	39022	25
1" Lead Free Brass Barb Coupling	39028	15
1-1/4" Lead Free Brass Barb Coupling	39040	1
1-1/2" Lead Free Brass Barb Coupling	39050	1
2" Lead Free Brass Barb Coupling	39063	1

Description	Part #	Qty / Bag
1/2" x 3/8" Lead Free Brass Barb Coupling	39006	25
3/4" x 1/2" Lead Free Brass Barb Coupling	39225	25
1" x 3/4" Lead Free Brass Barb Coupling	39226	15
1-1/4" x 1" Lead Free Brass Barb Coupling	39240	1
1-1/2" x 1-1/4" Lead Free Brass Barb Coupling	39540	1
2" x 1-1/2" Lead Free Brass Barb Coupling	39250	1

Male Sweat Adapter 37100 series



Description	Part #	Qty / Bag
1/2" Lead Free Brass Male Sweat Adapter	37105	25
3/4" Lead Free Brass Male Sweat Adapter	37122	25
1" Lead Free Brass Male Sweat Adapter	37128	15
1/2" Pex X 3/4" Lead Free Brass Male Sweat Adptr.	37121	25
5/8" Pex X 3/4" Lead Free Brass Male Sweat Adptr.	37123	25
1 1/2" Lead Free Brass Male Sweat Adptr.	37155	1
2" Lead Free Brass Male Sweat Adptr.	37163	1

Female Sweat Adapter 37200 series



Description	Part #	Qty / Bag
1/2" Lead Free Brass Female Sweat Adapter	37205	25
3/4" Lead Free Brass Female Sweat Adapter	37222	25
1" Lead Free Brass Female Sweat Adapter	37228	25
1/2" Pex x 3/4" Lead Free Brass Female Swt Adapter	37229	25
5/8" Pex x 3/4" Lead Free Brass Female Swt Adapter	37230	25
1-1/4" Pex x 1-1/4" Lead Free Brass Female Swt Adapter	37440	1
1 1/2" Lead Free Brass Female Swt Adapter	37250	1
5/8" Pex x 3/4" 90 Deg Lead Free Brass Fem Swt Adapter	37224	25
1/2" Pex x 3/4" 90 Deg Lead Free Brass Fem Swt Adapter	37225	25

Fittings - F-1807 Brass

PEX Barb x MPT Adaptors 37500 series



Description	Part #	Qty / Bag
3/8" PEX Barb x 1/2" Lead Free MPT Adapter	37512	25
1/2" PEX Barb x 1/2" Lead Free MPT Adapter	37505	25
3/4" PEX Barb x 3/4" Lead Free MPT Adapter	37522	25
1" PEX Barb x 1" Lead Free MPT Adapter	37528	15
1/2" PEX Barb x 3/4" Lead Free MPT Adapter	37552	25
1" PEX Barb x 3/4" Lead Free MPT Adapter	37582	10
1-1/4" PEX Barb x 1-1/4" Lead Free MPT Adapter	37444	1
1-1/2" PEX Barb x 1-1/2" Lead Free MPT Adapter	37555	1
2" PEX Barb x 2" Lead Free MPT Adapter	37022	1
1/2" PEX Barb x 1/2" Lead Free MPT 90 Deg. Adptr	37506	25
1/2" PEX Barb x 3/4" Lead Free MPT 90 Deg. Adptr	37509	25

FIP and FPT Adapter 37600 & 37700 series



Description	Part #	Qty / Bag
3/8" PEX Barb x 1/2" FPT Lead Free Adapter	37620	25
1/2" PEX Barb x 1/2" FPT Lead Free Adapter	37605	25
1/2" PEX Barb x 3/4" FPT Lead Free Adapter	37609	25
3/4" PEX Barb x 3/4" FPT Lead Free Adapter	37622	25
1" PEX Barb x 1" FPT Lead Free Adapter	37628	10
1-1/4" PEX Barb x 1-1/4" FPT Lead Free Adapter	37640	1
1-1/2" PEX Barb x 1-1/2" FPT Lead Free Adapter	37650	1
3/4" PEX x 3/4" FIP Swivel Lead Free Adapter	37722	25
1/2" PEX x 1/2" FIP Swivel Lead Free Adapter	37755	25
1/2" PEX x 3/4" FIP Swivel Lead Free Adapter	37752	25

Barbed Plugs 35000 series



Description	Part #	Qty / Bag
3/8" Lead Free Brass Barbed Plug	35012	25
1/2" Lead Free Brass Barbed Plug	35005	25
3/4" Lead Free Brass Barbed Plug	35022	25
1" Lead Free Brass Barbed Plug	35028	15
1-1/4" Lead Free Brass Barbed Test Plug	35040	1
1-1/2" Lead Free Brass Barbed Test Plug	35050	1
2" Lead Free Brass Barbed Test Plug	35063	1

Fittings - F-1807 Brass

Drop Ear Elbow 38305



Description	Part #	Qty / Bag
1/2" FIP Lead Free Brass Drop Ear Elbow	38305	25

Stub Out Elbow 38205



Description	Part #	Qty / Bag
1/2" Lead Free Stub Out Elbow 3-1/2"x8	38205	1
1/2" Lead Free Stub Out Elbow 3-1/2"x8 w/Nail Flange	38206	1

Ball Valves 33700 series



Description	Part #	Qty
1/2" PEX Straight Lead Free Ball Valve	33705	1
3/4" PEX Straight Lead Free Ball Valve	33722	1
1" PEX Straight Lead Free Ball Valve	33728	1
1-1/4" PEX Straight Lead Free Ball Valve	33740	1
1-1/2" PEX Straight Lead Free Ball Valve	33750	1
2" PEX Straight Lead Free Ball Valve	33763	1

Ball Valves 33500 series



Description	Part #	Qty
1/2" PEX x 3/8" OD Str Lead Free VLV Lever Handle	33505	1



Description	Part #	Qty
1/2" PEX x 3/8" OD Ang Lead Free VLV Lever Handle	33605	1

Multiport Tees

Multiport Tees 26000 series



Description	Part #	Qty
3/4" F1807 Inlet W /3-1/2" Outlet Multiport Tee No Lead	26019	1
3/4" F1807 Inlet W /4-1/2" Outlet Multiport Tee No Lead	26020	1
3/4" F1807 Inlet & Outlet W /3-1/2" Outlet Multiport Tee No Lead	26021	1
3/4" F1807 Inlet & Outlet W /4-1/2" Outlet Multiport Tee No Lead	26022	1

Multiport Tees 26300 series



Description	Part #	Qty / Bag
F2159 3/4" Inlet/Outlet W/2) 1/2" Outlet Plastic Multiport Tee	26332	1
F2159 3/4" Inlet/Outlet W/3) 1/2" Outlet Plastic Multiport Tee	26333	1
F2159 3/4" Inlet/Outlet W/4) 1/2" Outlet Plastic Multiport Tee	26334	1
F2159 3/4" Inlet/Outlet W/6) 1/2" Outlet Plastic Multiport Tee	26336	1
F2159 3/4" Inlet W/2) 1/2" Outlet Plastic Multiport Tee	26322	1
F2159 3/4" Inlet W/3) 1/2" Outlet Plastic Multiport Tee	26323	1
F2159 3/4" Inlet W/4) 1/2" Outlet Plastic Multiport Tee	26324	1

Multiport Tees 36000 Series



Description	Part #	Qty / Bag
F1960 3/4" Inlet/Outlet W/2) 1/2" Outlet Multiport Tee	36332	1
F1960 3/4" Inlet/Outlet W/3) 1/2" Outlet Multiport Tee	36333	1
F1960 3/4" Inlet/Outlet W/4) 1/2" Outlet Multiport Tee	36334	1
F1960 3/4" Inlet/Outlet W/6) 1/2" Outlet Multiport Tee	36336	1
F1960 3/4" Inlet W/3) 1/2" Outlet Multiport Tee	36323	1
F1960 3/4" Inlet W/4) 1/2" Outlet Multiport Tee	36324	1
F1960 3/4" Inlet W/6) 1/2" Outlet Multiport Tee	36326	1

Opposing Port Multiport Tees 36000Series



New Item

New Item

New Item

New Item

New Item

New Item

Description	Qty / Bag
F1960 3/4" Inlet/Outlet W/3 1/2" Outlets	36313 1
F1960 3/4" Inlet/Outlet W/4 1/2" Outlets	36314 1
F1960 3/4" Inlet/Outlet W/6 1/2" Outlets	36316 1
F1960 3/4" Inlet W/3 1/2" Outlets	36303 1
F1960 3/4" Inlet W/4 1/2" Outlets	36304 1
F1960 3/4" Inlet W/8 1/2" Outlets	36308 1

Fittings - F-2159 PPSU Plastic

AquaSeal Proplas plastic fittings are manufactured to ASTM F2159 and CSA B137.5 standards and approved by CSA, IAPMO and NSF.

ProPlas Elbows 185000 series



	Description	Part #	Qty / Bag
	ProPlas 1/2" Barb Elbow	185033	50
	ProPlas 3/4" Barb x 1/2" Barb ELL	185043	50
	ProPlas 3/4" Barb Elbow	185044	50
	ProPlas 1" Barb Elbow	185054	25

ProPlas Swivel Elbows 185300 series



	Description	Part #	Qty / Bag
	ProPlas 1/2" Barb x 1/2" Swivel ELL	185333	50
	ProPlas 3/4" Barb x 3/4" Swivel ELL	185344	50

ProPlas Barbed 90 Degree Adapter 195300 series



	Description	Part #	Qty / Bag
	1/2" Barb x 3/8" MPT 90 Deg. Adapter	195328	25
	1/2" Barb x 1/2" MPT 90 Deg. Adapter	195322	25
	3/4" Barb x 3/4" MPT 90 Deg. Adapter	195434	25

ProPlas Barbed Tees 16500 series



	Description	Part #	Qty / Bag
	ProPlas 1/2" x 1/2" x 1/2" Barb Tee	165333	50
	ProPlas 3/4" x 3/4" x 3/4" Barb Tee	165444	50
	ProPlas 1" x 1" x 1" Barb Tee	165555	25



	Description	Part #	Qty / Bag
	ProPlas 1/2" x 1/2" x 3/4" Barb Tee	165334	50
	ProPlas 3/4" x 1/2" x 1/2" Barb Tee	165433	50
	ProPlas 3/4" x 1/2" x 3/4" Barb Tee	165434	50
	ProPlas 3/4" x 3/4" x 1/2" Barb Tee	165443	50
	ProPlas 1" x 1" x 1/2" Barb Tee	165553	25
	ProPlas 1" x 3/4" x 3/4" Barb Tee	165544	25
	ProPlas 1" x 3/4" x 1" Barb Tee	165545	25
	ProPlas 1" x 1" x 3/4" Barb Tee	165554	25



Fittings - F-2159 PPSU Plastic

ProPlas Barb Coupling 175000 series



Description	Part #	Qty / Bag
ProPlas 1/2" x 1/2" Barb Coupling	175033	50
ProPlas 3/4" x 1/2" Barb Coupling	175043	50
ProPlas 3/4" x 3/4" Barb Coupling	175044	50
ProPlas 1" x 3/4" Barb Coupling	175054	25
ProPlas 1" x 1" Barb Coupling	175055	25

ProPlas Swivel Coupling 195000 series



Description	Part #	Qty / Bag
ProPlas 3/8" Barb x 1/2" Swivel Coupling	195203	50
ProPlas 1/2" Barb x 1/2" Swivel Coupling	195033	50
ProPlas 3/4" Barb x 3/4" Swivel Coupling	195044	50

ProPlas Barbed straight Adapter 195300 series



Description	Part #	Qty / Bag
1/2" Barb x 1/2" MPT Straight Adapter	195333	100
1/2" Barb x 3/4" MPT Straight Adapter	195334	50
3/4" Barb x 3/4" MPT Straight Adapter	195344	100

ProPlas Barbed Plugs 15500 series



Description	Part #	Qty / Bag
ProPlas 3/8" Barb Plug	155038	50
ProPlas 1/2" Barb Plug	155012	25
ProPlas 3/4" Barb Plug	155034	25
ProPlas 1" Barb Plug	155001	25

Press Sleeves & Tools

PEX Pipe Cutters



Description	Part #	Qty
Plastic Tubing Cutter	10100	1
1/2" & 3/4" Pex Tubing Cutter	10101	1



Quick precision cutting on PEX pipe or non-metallic tubing.

Press Sleeves & Tools



Description	Part #	Qty
1/2" Press Sleeve	24312	1
3/4" Press Sleeve	24334	1
1" Press Sleeve	24301	

Description	Part #	Qty
1" Press Sleeve Tool	13101	
Close Qtr. Press Sleeve Tool	13102	1
1/2" & 3/4" Combo Press Sleeve Tool	12123	1



Description	Part #	Qty
1/2", 3/4", 1" Manual Expansion Tool	12432	1
DeWalt 20V 1/2" - 1" Expansion Tool	12433	1



PinchLok Clamps & Tools

Pinchlok Clamps 24100 series



NEW! Now with Pex Grip technology! Stays in place prior to crimping.

Description	Part #	Qty / Bag
AquaSeal 1/2" Pex Grip Clamps*	24176	100
AquaSeal 3/4" Pex Grip Clamps*	24234	50
PinchLoK 3/8" Clamps*	24133	100
PinchLoK 5/8" Clamps*	24119	50
PinchLoK 1" Clamps*	24296	50

* Fittings made with Oetiker style clamp tool carry a life time warranty

Pinchlok Clamp Tool



Description	Part #	Qty
PinchLoK 3-Handle Clamp Tool (Domestic)	12148	1
One Hand Stainless Clamp Tool 3/8" - 1"	12150	1
PinchLock Oetiker Refurbish Kit	12222	1

Crimp Connectors 24000 series



Description	Part #	Qty
3/8" Crimp Ring, annealed black Copper	24012	100
1/2" Crimp Ring, annealed black copper	24005	100
3/4" Crimp Ring, annealed black copper	24022	100
1" Crimp Ring, annealed black copper	24028	25
1-1/4" Crimp Ring, annealed black copper	24014	25
1-1/2" Crimp Ring, annealed black copper	24016	25
2" Crimp Ring, annealed black copper	24002	25

Crimp Tools 11000 series



Description	Part #	Qty
Combination 1-1/4", 1-1/2", 2" Copper Crimp Ring Tool	11104	1
1/2" Crimp Tool	11105	1
1/2" - 3/4" Crimp Tool	11522	1
3/4" Crimp Tool	11122	1
1" Crimp Tool	11128	1

Product Properties

HDPE Outer Jacket

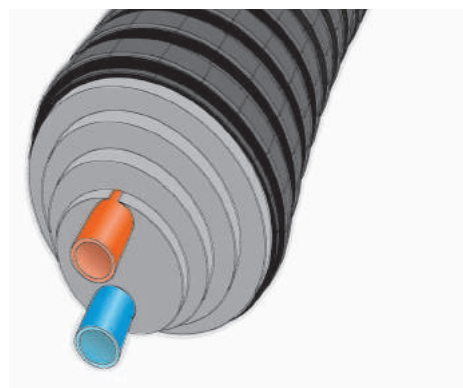
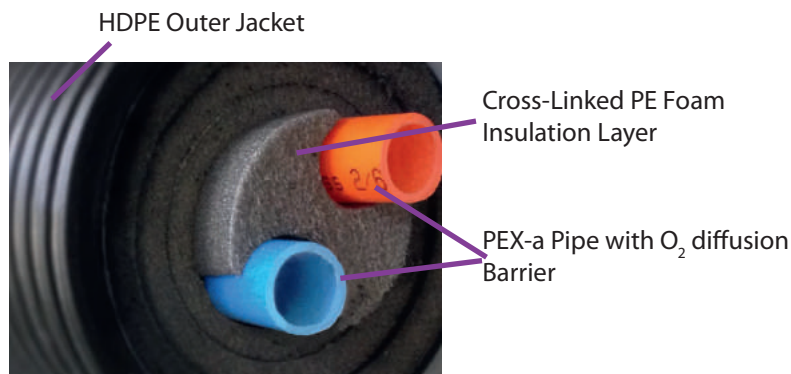
This corrugated high density polyethylene casing provides the necessary mechanical protection and water sealant properties, and is shock-resistant, even at sub-zero temperatures

Insulation Properties

The insulation of Terre-Pex pipes is fully composed of micro-cellular cross linked polyethylene foam with a closed cellular structure, permitting low water vapor diffusion, good insulation and resistance to extreme temperatures and is not water soluble like competition using polyurethane.

Pex-A Pipe

Plastic pipes have more than proved their quality in recent years. They are flexible, heat and pressure resistant, non-corrosive and lightweight. The Terre-Pex pipe is supplied with pipes manufactured according to the Engel process.



Applications

Terre-Pex Piping Systems are a complete line of flexible piping from 1" to 4" in size with all required accessories for cost effective and permanent installations of:

- **District Heating and Cooling** running hydronic lines between buildings with minimal energy losses, through unheated spaces, and for extending traditional distribution systems easily and economically
- **Underground Piping Systems** direct burial of lines up to 328' in length without joints for chilled water, condenser water, or any subterranean system requiring minimal heat gains/losses
- **Plumbing Systems** for networked cold, hot, and recirculated water lines between buildings, to external or remote facilities such as barns, animal sheds, etc.
- **Radiant & snowmelting Systems** for feeding remote manifold boxes or adding onto existing systems
- **Interior Building Piping** to provide the quickest and most guaranteed installation of piping systems with no couplings or joints, already insulated to save time and money at the jobsite, and allow maximum flexibility of carrier pipes through difficult spaces.

Terre-Pex Insulated Pipe System

Terre-Pex Insulated Pipes are the ideal solution for delivery of hot and chilled water where the energy preservation is key. Terre-Pex insulated piping provides the highest bending flexibility in the industry and thus minimizes overhead in project related pipe system considerations.

We differentiate Terre-Pex insulated pipes with either single or double carrier pipes for convenient supply and return piping based on project needs.

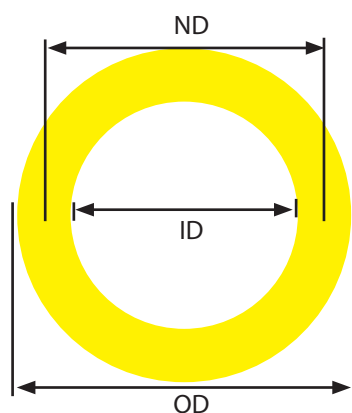
Terre-Pex insulated pex-A pipe can be delivered in any length required up to full coils of 328 feet. ComfortPro Systems provides a cut-to-length quick ship service for your project's needs. There is an additional cut fee per cut with this service. With a wide selection of pipe diameters in stock CPS can provide the right solution for your application requirements.

ComfortPro Systems also offers a full selection of pipe matching brass fittings 1" to 4" (110mm)

Energy Efficiency of Terre-Pex Pipes (R-Value)

Insulation Efficiency is commonly referred to as R-value. The tables below show R-Values for Terre-Pex Single and Double pipes.

Nomenclature Diameters



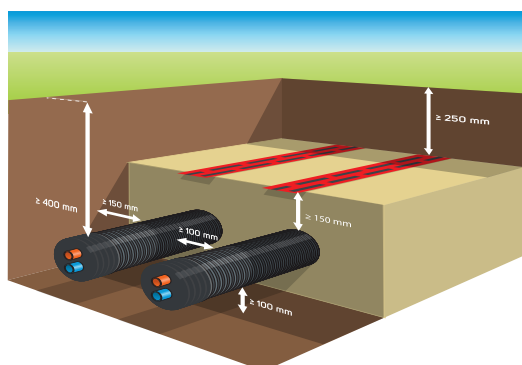
ND = Nominal Diameter
ID = Internal Diameter
OD = Outer Diameter

Single Heating Pipes

Art. No.	Jacket pipe OD in	Medium pipe OD in	s in	ID in	Bending radius in	water content gal/100ft	Heat capacity Btu/hr	R-value Btu/hr / ft / °F
H9032	3.5	1.26	0.11	1.03	9.8	4.34	205	7.064
H14040	5.5	1.57	0.15	1.28	13.8	6.72	307	6.868
H14050	5.5	1.97	0.18	1.61	15.7	10.53	478	6.868
H16063	6.3	2.48	0.23	2.02	21.7	16.71	751	6.434
H16075	6.3	2.95	0.27	2.42	29.5	23.85	1126	5.229
H20090	7.9	3.54	0.32	2.90	43.3	34.27	1638	5.227
H200110	7.9	4.33	0.39	3.54	47.2	51.24	2388	3.889

Double Heating Pipes

Art. No.	Jacket pipe OD in	Medium pipe OD in	s in	ID in	Bending radius in	water content gal/100ft	Heat capacity Btu/hr	R-value Btu/hr / ft / °F
HD1401	5.5	0.98	0.09	0.8	13.8	5.26	1.02	7.109
HD14032	5.5	1.26	0.11	1.03	15.7	8.68	205	5.661
HD16040	6.3	1.57	0.15	1.28	23.6	13.45	307	5.468
HD16050	6.3	1.97	0.18	1.61	23.6	21.06	478	3.918
HD20063	7.9	2.48	0.23	2.02	47.2	33.42	751	3.595



Quick Installation

1. Simply dig a trench (Minimum 24" deep)
2. Place 6" of sand into trench
3. Lay the Terre-Pex pipe in the trench
4. Cover over with fine earth or sand
5. Connect to appliance or wall outlet, e.g. boiler or heat exchanger

No compensation elements needed since the pipe moves inside the HDPE jacket with temperature.

Terre-Pex Insulated Pipe System

SINGLE Pipes



Description	Part #	Qty
32mm Single Insulated Pex 90mm Outer Jacket	H9032	1
1-1/4" 40mm Single Insulated Pex 140mm Outer Jacket	H14040	1
1-1/2" 50mm Single Insulated Pex 140mm Outer Jacket	H14050	1
2" 63mm Single Insulated Pex 160mm Outer Jacket	H16063	1
2-1/2" 75mm Single Insulated Pex 160mm Outer Jacket	H16075	1
3" 90mm Single Insulated Pex 200mm Outer Jacket	H20090	1
4" 110mm Single Insulated Pex 200mm Outer Jacket	H200110	1

DOUBLE Pipes



Description	Part #	Qty
28mm Double Insulated Pex 140mm Outer Jacket	HD1401	1
32mm Double Insulated Pex 140mm Outer Jacket	HD14032	1
1-1/4" 40mm Double Insulated Pex 160mm Outer Jacket	HD16040	1
1-1/2" 50mm Double Insulated Pex 160mm Outer Jacket	HD16050	1
2" 63mm Double Insulated Pex 200mm Outer Jacket	HD20063	1

NPT Connectors



Description	Part #	Qty
32mm NPT Pex Connector	HC32/1	1
1-1/4" NPT 40mm Pex Connector	HC40/1.25M	1
1-1/2" NPT 50mm Pex Connector	HC50/1.5M	1
2" NPT 63mm Pex Connector	HC63/2M	1
2-1/2" NPT 75mm Pex Connector	HC75/2.5M	1
3" NPT 90mm Pex Connector	HC90/3M	1
4" NPT 110mm Pex Connector	HC110/4M	1

Couplings **New Item**



Description	Part #	Qty
32mm x 32mm Pex Coupling	HC32x32	1
1-1/4" 40mm x 40mm Pex Coupling	HC40x40	1
1-1/2" 50mm x 50mm Pex Coupling	HC50x50	1
2" 63mm x 63mm Pex Coupling	HC63x63	1
2-1/2" 75mm x 75mm Pex Coupling	HC75x75	1
3" 90mm x 90mm Pex Coupling	HC90x90	1
4" 110mm x 110mm Pex Coupling	HC110x110	1

Single Pipe Dust Caps



Description	Part #	Qty
1" 32mm Single Dust Cap 90mm OD	DEC90/32	1
1-1/4" 40mm Single Dust Cap 140mm OD	DEC140/40	1
1-1/2" 50mm Single Dust Cap 140mm OD	DEC140/50	1
2" 63mm Single Dust Cap 160mm OD	DEC160/63	1
2-1/2" 75mm Single Dust Cap 160mm OD	DEC160/75	1
3" 90mm Single Dust Cap 200mm OD	DEC200/90	1
4" 110mm Single Dust Cap 200mm OD	DEC200/110	1

Double Pipe Dust Caps



Description	Part #	Qty
1" 32mm Double Dust Cap 140mm OD	DECD140/32	1
1-1/4" 40mm Double Dust Cap 160mm OD	DECD160/40	1
1-1/2" 50mm Double Dust Cap 160mm OD	DECD160/50	1
2" 63mm Double Dust Cap 200mm OD	DECD200/63	1

Single Pipe Shrink Caps



Description	Part #	Qty
Single 1-1/4" & 1-1/2" Shrink Cap	SEC/40	1
Single 2" & 2-1/2" Shrink Cap	SEC/70	1
Single 3" & 4" Shrink Cap	SEC/80	1

Double Pipe Shrink Caps



Description	Part #	Qty
1" Double Shrink Cap 140mm OD	SECD/10	1
1-1/4" Double Shrink Cap 160mm OD	SECD/40	1
1-1/2" Double Shrink Cap 160mm OD	SECD/50	1
2" Double Shrink Cap 200mm OD	SECD/60	1

SSL Shrink Sleeves

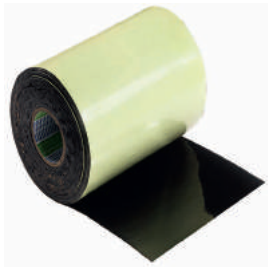


Description	Part #	Qty
90mm & 110mm Shrink Sleeve 225mm long	SSL90/110	1
140mm & 160mm Shrink Sleeve 225mm long	SSL140/160	1
200mm & 225mm Shrink Sleeve 225mm long	SSL200/225	1

Shrink Sleeves (SSL series)

Terre-Pex SINGLE and DOUBLE pipe Shrink Sleeve for HDPE jacket repair. An easy to use way to seal small cuts or damages to the outer jacket. The Terre-Pex shrink sleeve provides leakage protection into the insulation layer.

R Series Repair Tape



Description	Part #	Qty
200mm wide 10m long	RETAP-H	1
150mm wide 10m long	RETAP-C	1

Terre-Pex pre-insulated pipe solutions




Easy to install


Cost-Effective


Energy-saving

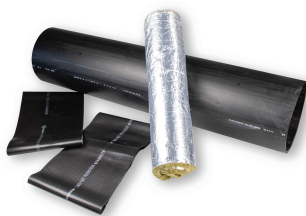
Wall Feed -Through Sleeves



Description	Part #	Qty
Fits 75 & 90mm Pipe 400mm long	WLS75/90	1
Fits 110mm Pipe 400mm long	WLS110	1
Fits 140 & 160mm Pipe 400mm long	WLS140/160	1
Fits 200mm Pipe 400mm long	WLS200	1

Terre-Pex Single and Double pipe (Not waterproof) Wall Feed-Through to hold Terre-Pex pipe jackets in place for wall openings, etc.

SIS Series Terre-Pex Straight Insulation Sleeves



Description	Part #	Qty
Straight Insulation Sleeves 225mm x 1000mm long	SIS200	1
Straight Insulation Sleeves 180mm x 1000mm long	SIS160	1
Straight Insulation Sleeves 160mm x 850mm long	SIS140	1
Straight Insulation Sleeves 125mm x 700mm long	SIS110	1
Straight Insulation Sleeves 110mm x 700mm long	SIS90/75	1

T Series Terre-Pex Insulation Kit



Description	Part #	Qty
Fits 225/200/160/140mm Jacket Pipes	TIK225/140	1
Fits 140/110/90mm Jacket pipes	TIK140/90	1

L Series Terre-Pex Insulation Kit



Description	Part #	Qty
Fits 225/200/160/140mm Jacket Pipes	LIK225/140	1

Y Series Terre-Pex Insulation Kit

Description	Part #	Qty
Fits 225/200/160/140mm Jacket Pipes	YIK225/140	1

U Series Terre-Pex Underground Inspection Chamber



Description	Part #	Qty
Fits 225/200/160/140mm Jacket Pipes	UIC225/140	1

U Series Terre-Pex Shrink Sleeve For Underground Inspection Chamber

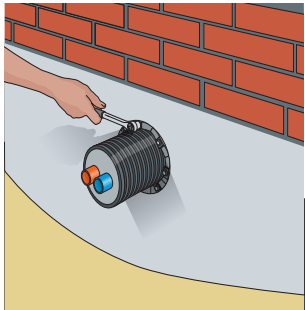
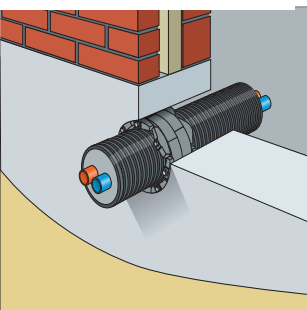
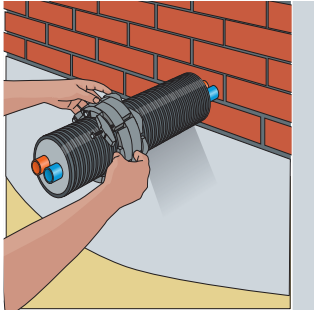
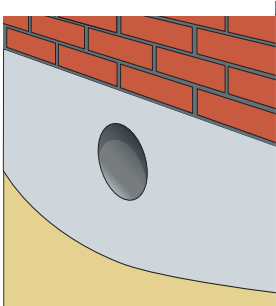
Description	Part #	Qty
Fits 200mm Jacket 225mm Long	SSL200/225	1
Fits 160mm Jacket 225mm Long	SSL160/180	1
Fits 140mm Jacket 225mm long	SSL140/160	1

SCHA Terre-Pex Seal Chain Assembly

Terre-Pex Single and Double Pipe Seal Chain Assembly Wall Feed-Through allow to securely anchor Terre-Pex pipe outer jackets or large diameter PEX piping in wall openings. Easy on-site assembly.



Description	Part #	Qty
Fits 90mm Pipe -150mm Wall Opening	SCHA9/340	1
Fits 110mm Pipe -150mm Wall Opening	SCHA10/300	1
Fits 140mm Pipe -200mm Wall Opening	SCHA13/340	1
Fits 160mm Pipe -250mm Wall Opening	SCHA9/475	1
Fits 200mm Pipe -250mm Wall Opening	SCHA9/325	1





FACTORY WARRANTY

AquaHeat

Radiant Heating and Snowmelting Products

All AquaHeat barrier pex pipes have a 30 year limited factory warranty against defects in material and workmanship. All AquaHeat manifolds, parts, and fittings also carry a 25 year limited factory warranty.

All Pro Zone thermostats and controls have a 2 year limited factory warranty.

AquaSeal

Pex Piping & Plumbing Products

All AquaSeal pex pipes, fittings and accessories have a 25 year limited factory warranty against defects in material and workmanship.

TerrePex

Pre Insulated Pex-A Piping Systems

All Terre-Pex Insulated Pipes, fittings, and accessories have a 10 year limited factory warranty against defects in material and workmanship.

All pex A pipes are manufactured in Israel and all pex B pipes are manufactured in the USA.

Within the first 10 years of above warranties, Comfort Pro Systems will cover reasonable costs in consequential damages if found to be the direct fault of Comfort Pro products and customer has taken necessary steps to stop damages to said property. Comfort Pro will not be responsible for labor or other costs associated with replacement of products.

*Please see website for more detailed warranty policies and procedures:
www.comfortprosystems.com*

Comfort Pro Systems, LLC

Distribution Center

24000 S. Peculiar Drive, Peculiar, MO 64078

Customer Service 816-425-9824

Phone (816)425-9824

Toll Free 800-968-8905

Fax (816)-479-4568

www.comfortprosystems.com

orders@comfortprosystems.com

This image shows a full page of blank graph paper. The grid consists of small, equal-sized squares formed by thin, light gray lines. There are 20 columns and 20 rows of squares, creating a total of 400 square units. The background is white, and the grid covers the entire area of the page without any margins or additional markings.



*A systems approach
integrating established &
emerging technologies.*

