

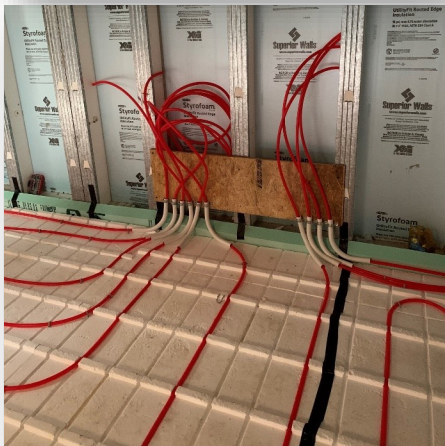
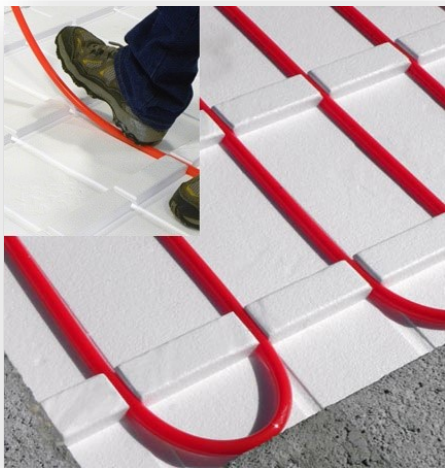
ComfortPro®

NEW PRODUCT BULLETIN

INSUL-SNAP PEX PANEL

INSUL-SNAP ADVANTAGES

- Fast & Simple Installation
- 4'x 4' Panels
- 6" Spacing (6"-12" layout)
- 1/2" or 5/8" Piping
- Minimum Stapling
- Easily Trimmed
- Bonds Well to Concrete
- Maintains a 8.7 R-Value
- Competitive



Part #	Description	Unit
102515	4'x 4'x 2" Insul-Snap Pex Panel - 1/2" or 5/8" R8.7 25PSI	Ea.
10223	2 5/8" Multi Tacker Staples	300
10221	Multi-Tacker Tool	Ea.

ComfortPro
A better approach. A better system.
AquaHeat

ComfortPro
A better approach. A better system.
AquaSeal

ComfortPro
A better approach. A better system.
AquaMelt

ComfortPro
A better approach. A better system.
Terre-Pex

24000 S PECULIAR DRIVE, PECULIAR, MO 64078

WWW.COMFORTPROSYSTEMS.COM

1-800-968-8905