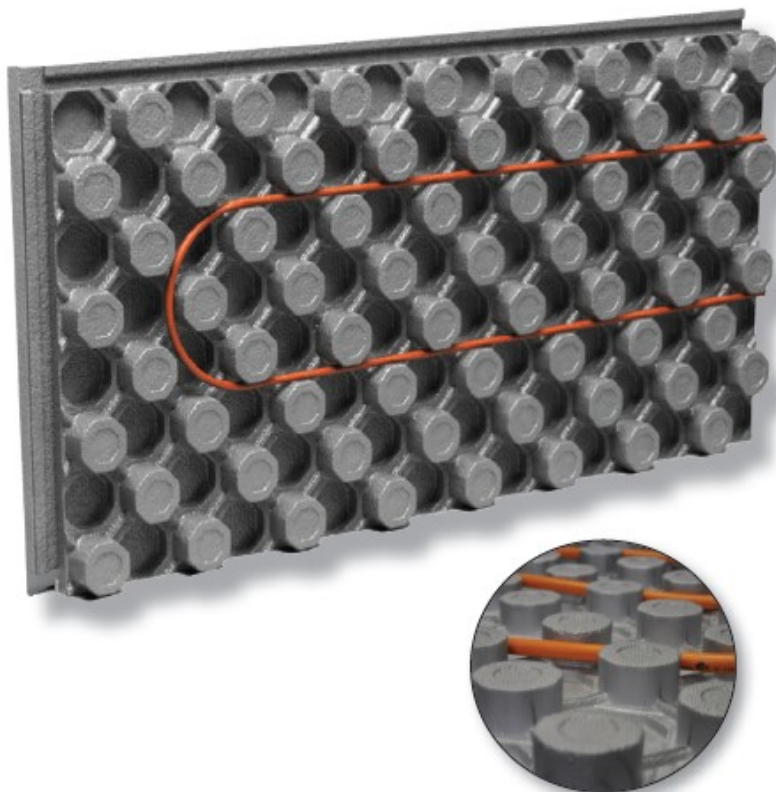


# ComfortPro®

## R10 INSULATED PEX PANEL



### PRODUCT OVERVIEW

- » Designed to provide the most cost effective installation and performance characteristics for hydronic radiant floor heating systems
- » Innovative patented panel design that allows for better heat distribution
- » Expanded polystyrene (EPS) insulation and high impact polystyrene film combination

### PRODUCT BENEFITS

- » No staples or ties required
- » Walk in installation
- » Superior tube insulation
- » Integrated vapor barrier
- » Suitable for multiple pex tube diameters
- » Save time, labor and money
- » Available for residential and commercial applications, 28 and 45 psi

Standard	ASTM C518-10	ASTM D1621-10	ASTM E 96/E96M-12	Overall Board Size (l x w)	Usable Size (l x w)	Overall Thickness Including Grid	Pex Pipe Accommodation
Description	R-Value	Compressive Strength	Water Vapor Barrier	Inches	Inches	Inches	Inches
102015	10°F.ft² .h/Btu	28.0 psi	23.8 (ng/Pa.s.m²) 0.42 Perms	49.25" x 25.25"	48" x 24"	3 3/8"	3/8", 1/2", 5/8", 3/4", 1"

### R10 Insulation Panels

102015	R10 Insulated Pex Floor Panel -24" X 48"	Each	20
--------	--	------	----

**ComfortPro**  
A better approach. A better system.  
**AquaHeat**

**ComfortPro**  
A better approach. A better system.  
**AquaSeal**

**ComfortPro**  
A better approach. A better system.  
**AquaMelt**

**ComfortPro**  
A better approach. A better system.  
**Terre-Pex**

24000 S PECULIAR DRIVE, PECULIAR, MO 64078

WWW.COMFORTPROSYSTEMS.COM

1-800-968-8905